

PROFESSIONALS PREFER POWERWELD

**QUALITY
WELDING,
SAFETY AND
INDUSTRIAL
SUPPLIES**

POWERWELD®
QUALITY WELDING, SAFETY & INDUSTRIAL SUPPLIES SINCE 1983

TABLE OF CONTENTS

DESCRIPTION

PAGE

GAS WELDING PRODUCTS

Oxy-Acetylene Heavy Duty Outfits	4
Oxy-Acetylene Medium Duty Outfits	5
Tote-A-Torch Kit	6
Regulators Light, Medium & Heavy Duty	7
Flowmeters & Nitrogen Regulators	8
Welding & Cutting Torches	9
Cutting Tips	10
Welding & Heating Tips	11
Pressure Gauges, Balloon Fillers	12
Hose Single, Twin, Argon, Air	13
Propane Torches, Propane Regulator	14
Propane Auto Ignite Torch, Propane Hose	15
Cylinder Carts	16
Hose Reels	17
Hose Repair Kits, Circle Burner, Hose Clamp Pincers, Tip Cleaners & Drill Kit, Cylinder Caps, Cylinder Wrenches,	18

ARC WELDING PRODUCTS

Electrode Holders, Ground Clamps	19
Specialized Ground Clamps	20
Cable Lugs, Chipping Hammers	21
Cable Connectors	22
Gouging Torches, Carbons	23
RK4000 Replacement Parts	24
Welding Cable	25
MIG Welder Carts	26

WELDING MACHINES

MIG Flux Cored Welder	27
Inverter Stick Welder	28
Inverter Plasma Cutter	29

FILLER METAL PRODUCTS

Tungsten Electrodes	30
ER70S-6 Mild Steel Wire & TIG Rods	31
Flux Cored Wire	32
Mild Steel & Low Hydrogen Electrodes	33
Stainless Steel, MIG / TIG Wire, Electrodes	34
Aluminum Alloys	35
Copper Based Alloys	36



TABLE OF CONTENTS

DESCRIPTION	PAGE
SAFETY PRODUCTS	
Auto Darkening Helmets Professional Series	37
Auto Darkening Helmets Professional & Expert Series	38
Auto Darkening Helmets Deluxe and Passive Filter Series	39
Welding & Cutting Goggles	40
Filter & Cover Plates	41
Magnifiers, Auto Darkening Cartridges	42
Replacement Visors	43
Sweat Bands, Faceshield Headgear, Auto Darkening Lens, Gold Filter Plates	44
Welding Gloves, MIG & TIG Gloves, Work Gloves, Drivers Gloves	45
Mechanics Gloves, MIG/TIG Gloves	46
Welding Curtains, Frames	47
Welding Clothing, Welding Jackets, Back Hand Pads	48
FR Clothing	49
HIVIS Safety Jackets	50
Welding & Fire Blankets	51
Standard Welder's Kit, Helmet Bag	52
Deluxe Welder's Kit, Duffle Bag	53
CHEMICAL PRODUCTS	
Anti-Spatter, Nozzle Dip, Zinc Galv Spray, Coolant, NDT	54
Silver Brazing Flux, Lube Pads & Lubricant	55
TOOLS & ACCESSORIES	
Fillet Gauges	56
Locking Pliers	57
Cable Hitch, Nozzle Reamer, Battery Clamps, Tungsten & Torch Holders	58
Magnets, Switchable Magnets	59
Spool Adaptor, TIG Kits, Welding Table, TIG Feeder, Pliers, Soapstone Holders	60
Soapstone Crayons, Wire Brushes, Cable Cutter, Files	61
Pipe Stands	62
TIG Torch Adaptors	63
C & F Clamps, Digital Thermometers	64
Rap Arounds, Cable Covers, Pipe Wedges	65
Extension Cords, Electrode Oven	66
Butane Torch, Gas Flow Tester, Gas Saver, Lighter	67
Cup Wheels, Stringer Bead Wheels	68
Reflex Abrasives	69
Electrode Canisters, Pipeline Welding Clamps	70
Inspection Mirrors, Welding Umbrella	71
Tungsten Electrode Sharpener, Portable Welding Booth	72



OXY-ACETYLENE OUTFITS

METALMASTER™

PROFESSIONAL HEAVY DUTY
WELDING AND CUTTING OUTFITS

TWO YEAR WARRANTY

MM-V & MM-H

VICTOR® STYLE

HARRIS® STYLE

Cuts up to 3/4" or 8" with optional cutting tips.
Welds up to 1/2" - 3" with optional welding tips.
Heavy duty combination torch, regulator set and accessories housed in a quality stainless steel and metal carrying case for convenient storage.

VICTOR® STYLE OUTFIT

Outfit Model	Torch Handle	Cutting Attach	Regulators		Cutting Tips	Welding Tips	Heating Tips	Welding Hose	Capacity	
			Oxy	Acet					Welding Up to	Cutting Up to
MM-V	PW315	PW2460	PWORMD	PWARMD	1-1-101	1-W	-	15 FT	3"	8"

HARRIS® STYLE OUTFIT

Outfit Model	Torch Handle	Cutting Attach	Regulators		Cutting Tips	Welding Tips	Heating Tips	Welding Hose	Capacity	
			Oxy	Acet					Welding Up to	Cutting Up to
MM-H	HC231	HC232	PWORMD	PWARMD	6290-1	23A90-1	-	15 FT	1/2"	5"

CONSISTS OF



HARRIS® is a registered trademark of The Lincoln Electric Company. VICTOR® is a registered trademark of Esab Welding and Cutting Products. Powerweld is in no way affiliated with these original equipment manufacturers.

OXY-ACETYLENE OUTFITS

METALMASTER™

PROFESSIONAL MEDIUM DUTY WELDING AND CUTTING OUTFIT

CAPACITY

Cutting up to 6" (150mm)
Welding up to 3/8" (9mm) steel

FEATURES

Brass & stainless steel construction
torch handle with two stainless steel
needle valves for fast accurate flame
adjustment.
O-ring seals.
Forged and extruded brass for durability.
External torch mounted reverse flow
check valves.
Complete accessory package, hose,
lighter & goggles.

APPLICATIONS

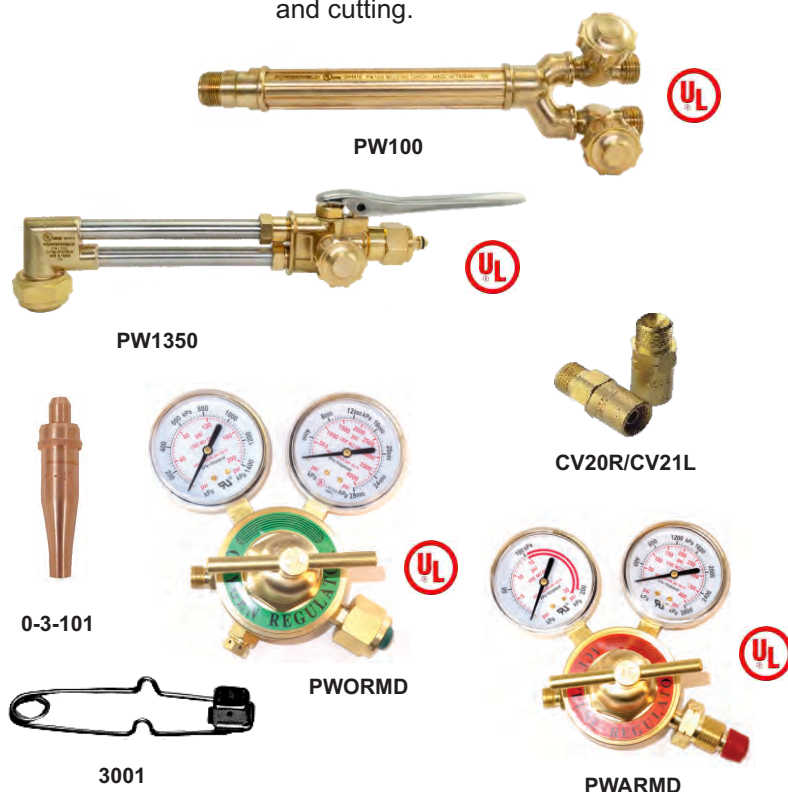
Precise welding, brazing, soldering,
hard facing, heat/treating and priming,
straightening, deseaming and scarfing,
gouging, flame cleaning, rivet washing
and cutting.



Outfit Model	Torch Handle	Cutting Attach	Regulators Oxy	Regulators Acet	Cutting Tips	Welding Tips	Check Valves	Welding Hose	Capacity	
									Welding Up to	Cutting Up to
PWVKITMD	PW100	PW1350	PWORMD	PWARMMD	0-3-101	0-W-1	CV20/21	12 FT	3/8"	6"

CONSISTS OF

- PWORMD Oxygen Regulator
- PWARMMD Acetylene Regulator
- PW100 Welding Torch
- PW1350 Cutting Attachment
- 3-101 Cutting Tip Size #0
- W-1 Welding Tip Size #0
- CV20R/CV21L Check Valve Set
- PW316-12 Twin Welding Hose
- R1165 Welding Goggles
- 3001 Flint Lighter



OXY-ACETYLENE OUTFITS

TOTE-A-TORCH KIT



Contains all the equipment you need for cutting, welding and brazing anywhere in a rugged plastic carrying case.

Cuts up to 6" (150mm) and welds up to 3/8" (9mm)

9/16"-18 "B" Connections



TOTE-A-TORCH KIT

MODEL	STYLE
PTK	W/O CYLINDERS

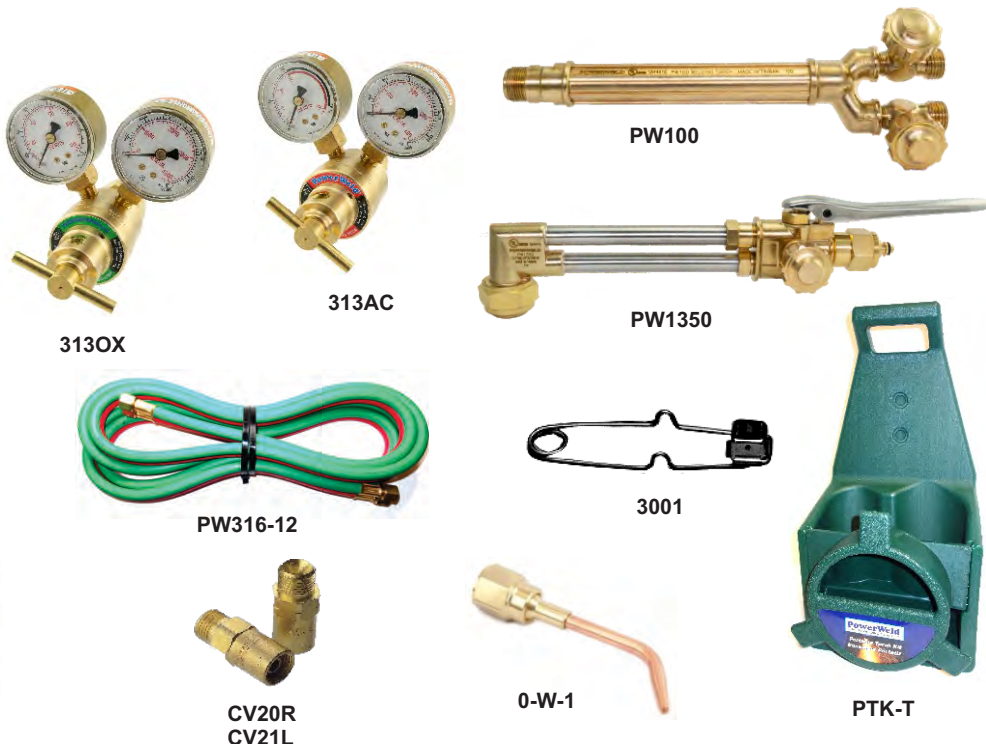
TOTE-A-TORCH KIT

MODEL	STYLE
PTK-C	OX-20 OXY CYL / AC-10 ACET CYL

TORCH HANDLE	CUTTING ATTACHMENT	CUTTING TIP	WELDING TIP	SINGLE STAGE OXYGEN REGULATOR	SINGLE STAGE ACETYLENE REGULATOR	CHECK VALVE	ACCESSORIES
PW100 UL LISTED	PW1350 UL LISTED	0-3-101	0-W-1	313OX UL LISTED	313AC UL LISTED	CV20R CV21L	GOGGLES, STRIKER, 12.5' TWIN HOSE, & CARRYING CASE

CONSISTS OF

- 313OX Oxygen Regulator
- 313AC Acetylene Regulator
- PW100 Welding Torch
- PW1350 Cutting Attachment
- 3-101 Cutting Tip Size #0
- W-1 Welding Tip Size #0
- CV20R/CV21L Check Valve Set
- PW316-12 Twin Welding Hose
- R1165 Welding Goggles
- 3001 Flint Lighter
- PTK-T Carry Tote



OXYGEN & ACETYLENE REGULATORS

LIGHT DUTY



- 313OX Oxygen Rear Entry**
- Maximum inlet pressure 3000 PSI
 - Delivery pressure 5-80 PSI
 - 2" Gauges
 - CGA-540 inlet connection
 - 9/16" - 18RH (M) outlet connection



- 313AC Acetylene Rear Entry**
- Maximum inlet pressure 400 PSI
 - Delivery pressure 2-15 PSI
 - 2" Gauges
 - CGA-200 inlet connection
 - 9/16" - 18LH (M) outlet connection
- 313AC-B** CGA-520 inlet connection

MEDIUM DUTY



- PWORMD Oxygen**
- Maximum inlet pressure 3000 PSI
 - Delivery pressure 5-100 PSI
 - 2.5" gauges
 - CGA-540 inlet connection
 - 9/16" - 18RH (M) outlet connection



- PWARMMD Acetylene**
- Maximum inlet pressure 400 PSI
 - Delivery pressure 2-15 PSI
 - 2.5" Gauges
 - CGA-510 inlet connection
 - 9/16" - 18LH (M) outlet connection



- OR25 Oxygen**
- Maximum inlet pressure 3000 PSI
 - Delivery pressure 5-100 PSI
 - 2.5" gauges
 - CGA-540 inlet connection
 - 9/16" - 18RH (M) outlet connection



- AR25 Acetylene**
- Maximum inlet pressure 400 PSI
 - Delivery pressure 2-15 PSI
 - 2.5" Gauges
 - CGA-510 inlet connection
 - 9/16" - 18LH (M) outlet connection



- OR-VM Oxygen**
- Maximum inlet pressure 3000 PSI.
 - Delivery pressure 5-100 PSI
 - 2" gauges
 - CGA-540 inlet connection
 - 9/16" - 18RH (M) outlet connection



- AR-VM Acetylene**
- Maximum inlet pressure 400 PSI
 - Delivery pressure 2-15 PSI
 - 2" Gauges
 - CGA-510 inlet connection
 - 9/16" - 18LH (M) outlet connection



- PWPRMD Propane**
- Maximum inlet pressure 400 PSI
 - Delivery pressure 2-40 PSI
 - 2.5" Gauges
 - CGA-510 inlet connection
 - 9/16" - 18LH (M) outlet connection

HEAVY DUTY



- OR400 Oxygen**
- Maximum inlet pressure 3000 PSI
 - Delivery pressure 5-100 PSI
 - 2.5" Gauges
 - CGA-540 inlet connection
 - 9/16" - 18RH (M) outlet connection



- AR410 Acetylene**
- Maximum inlet pressure 400 PSI
 - Delivery pressure 2-15 PSI
 - 2.5" Gauges
 - CGA-510 inlet connection
 - 9/16" - 18LH (M) outlet connection

FLOWMETERS & SPECIALTY REGULATORS

FLOWMETERS



100FL-AR60H Argon

- Maximum inlet pressure 3000 PSI
- Outlet pressure preset 50 PSI
- 1.5" - 4000 PSI gauge
- 0-60 SCFH
- CGA-580 Inlet connection
- 5/8" - 18RH(F) outlet connection
- c/w 10' Argon single hose.



PW195FM Inert Gas

- Maximum inlet pressure 50 PSI
- Flowmeter 0-60 SCFH
- 5/8" - 18RH(F) outlet connection
- 1/4" NPT (M) inlet connection.



101A Argon

- Maximum inlet pressure 3000 PSI
- Outlet pressure preset 50 PSI
- 2" - 4000 PSI Gauge
- 0-60 Flowmeter (SCFH)
- CGA-580 inlet connection
- 5/8" - 18RH (F) outlet connection



PW195AR-680 Argon

- Maximum inlet pressure 5500 PSI
- Outlet pressure preset at 50 PSI
- 2" - 6000 PSI Gauge
- 0-60 Flowmeter (SCFH)
- CGA-680 inlet connection
- 5/8" - 18RH (F) outlet connection



R14 Argon

- Maximum inlet pressure 3000 PSI
- Outlet flow 0 - 30 SCFH
- 2" Gauges
- CGA-580 inlet connection
- 5/8" - 18RH (F) outlet connection



101C Carbon Dioxide

- Maximum inlet pressure 3000 PSI
- Outlet pressure preset 50 PSI
- 2" - 4000 PSI Gauge
- 0-60 Flowmeter (SCFH)
- CGA-320 inlet connection
- 5/8" - 18RH (F) outlet connection



PWAGFG Argon

- Maximum inlet pressure 3000 PSI
- Outlet flow 0 - 30 SCFH
- 2" Gauges
- CGA-580 inlet connection
- 5/8" - 18RH (F) outlet connection



R15 Carbon Dioxide

- Maximum inlet pressure 3000 PSI
- Outlet flow 0 - 30 SCFH
- 2" Gauges
- CGA-320 inlet connection
- 5/8" - 18RH (F) outlet connection



PWAGFL Argon

- Economy Argon Regulator - Flowmeter
- For light duty MIG and TIG applications
- Compact design
- CGA-580 for Argon or mixed gases
- Flow 0 - 60 CFH
- 5/8" - 18RH (F) outlet connection



PW196AR Argon

- Maximum inlet pressure 3000 PSI
- Outlet pressure preset 50 PSI
- 2" - 4000 PSI Gauge
- Dual 0-60 Flowmeters (SCFH)
- CGA-580 inlet connection
- 5/8" - 18RH (F) outlet connection

NITROGEN REGULATORS



WT-304-210M Nitrogen

- High Pressure Regulator
- 2" gauges
- Delivery pressure range 200 - 3000 PSI
- 9/16" - 18RH (M) outlet connection
- CGA-580 Inlet connection

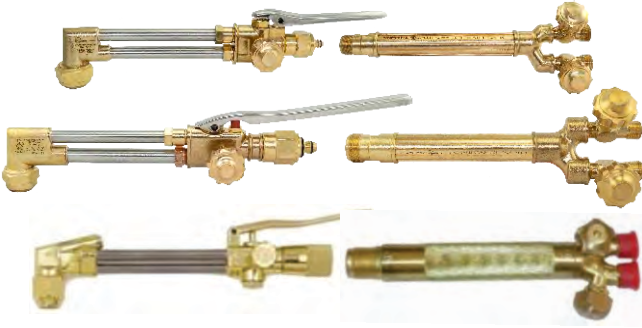
WT-304-210M-OX CGA-540 inlet connection



PWNR450F Nitrogen Purging Regulator

- Single-stage design
- 2" gauges for easy reading
- Designed for nitrogen gas service
- CGA-580 inlet connection
- 1/4" SAE flare outlet connection
- 3000 PSI maximum inlet pressure
- 450 PSI maximum delivery pressure

COMBINATION TORCHES



MODEL	STYLE	DESCRIPTION
PW100	VICTOR® 100	MEDIUM DUTY WELDING TORCH
PW1350	VICTOR® 1350	MEDIUM DUTY CUTTING ATTACHMENT
PW315	VICTOR® 315	HEAVY DUTY WELDING TORCH
PW2460	VICTOR® 2460	HEAVY DUTY CUTTING ATTACHMENT
HC231	HARRIS® 63-2	HEAVY DUTY WELDING TORCH
HC232	HARRIS® 73-2	HEAVY DUTY CUTTING ATTACHMENT

CUTTING TORCHES



MODEL	STYLE	DESCRIPTION
PW62-3E	HARRIS®	CUTTING TORCH 18" ACET 90D
PW62-3E-180	HARRIS®	CUTTING TORCH 18" ACET 180D
PW62-3E-36	HARRIS®	CUTTING TORCH 36" ACET 90D
PW62-3E-36-180	HARRIS®	CUTTING TORCH 36" ACET 180D
PW62-3E-36-70	HARRIS®	CUTTING TORCH 36" ACET 70D
PW62-3E-48	HARRIS®	CUTTING TORCH 48" ACET 90D
PW62-3E-48-180	HARRIS®	CUTTING TORCH 48" ACET 180D
PW62-3E-48-70	HARRIS®	CUTTING TORCH 48" ACET 70D
PW62-3E-70	HARRIS®	CUTTING TORCH 18" ACET 70D
PW62-3F	HARRIS®	CUTTING TORCH 18" FG 90D
PW62-3F-180	HARRIS®	CUTTING TORCH 18" FG 180D
PW62-3F-36	HARRIS®	CUTTING TORCH 36" FG 90D
PW62-3F-36-180	HARRIS®	CUTTING TORCH 36" FG 180D
PW62-3F-36-70	HARRIS®	CUTTING TORCH 36" FG 70D
PW62-3F-48	HARRIS®	CUTTING TORCH 48" FG 90D
PW62-3F-48-180	HARRIS®	CUTTING TORCH 48" FG 180D
PW62-3F-48-70	HARRIS®	CUTTING TORCH 48" FG 70D
PW62-3F-70	HARRIS®	CUTTING TORCH 18" FG 70D
PW1600	VICTOR®	CUTTING TORCH 21" VICTOR STYLE
PW1600-36	VICTOR®	CUTTING TORCH 36" VICTOR STYLE
PW1600-48	VICTOR®	CUTTING TORCH 48" VICTOR STYLE
PW1600-70	VICTOR®	CUTTING TORCH 21" 70 DEGREE
PW419	AIRCO®	CUTTING TORCH 19" AIRCO STYLE

HARRIS® is a registered trademark of The Lincoln Electric Company. VICTOR® is a registered trademark of Esab Welding and Cutting Products. Powerweld is in no way affiliated with these original equipment manufacturers.

CUTTING TIPS

PowerWeld tips are precision machined from high quality copper alloys for durability. The gas passages for single piece acetylene tips are accurately swage-forged and shaped on polished mandrels for smooth, efficient gas flow. Two piece tips for alternate fuel gases feature an internal spline configuration that is of the latest design, offering the optimum in cutting performance. All tips are 100% flame tested.



VICTOR® STYLE		
MODEL	SIZES	FUEL GAS
1-101	000 - 8	Acetylene
3-101	000 - 8	Acetylene
GPN	000 - 8	Propane/Nat Gas
3GPN	000 - 6	Propane/Nat Gas
GPM	000 - 6	Mapp Gas



AIRCO® / LIQUID AIR® STYLE		
MODEL	SIZES	FUEL GAS
144 / 802	00 - 8	Acetylene
164 / 803	00 - 8	Acetylene
261	00-6	Propane/Nat Gas
AFS	72-38	Mapp Gas



HARRIS® STYLE		
MODEL	SIZES	FUEL GAS
6290	000 - 6	Acetylene
629VVC	000 - 6	Propane/Nat Gas
6290NX	5/0 - 6	Propane/Nat Gas
6290NFF	000 - 6	Propane/Nat Gas



PUROX® STYLE		
MODEL	SIZES	FUEL GAS
4202	2-13	Acetylene
4213L	3-10	Propane



SMITH® STYLE		
MODEL	SIZES	FUEL GAS
MC-12	00 - 5	Acetylene
SC-12	00 - 6	Acetylene
SC-50	00 - 6	Propane/Nat Gas

HARRIS® is a registered trademark of The Lincoln Electric Company. VICTOR® and PUROX® are registered trademarks of Esab Welding and Cutting Products. SMITH® is a registered trademark of ITW Welding. Powerweld is in no way affiliated with these original equipment manufacturers.

WELDING & HEATING TIPS

Powerweld welding nozzles and heating tips are compatible with Powerweld and OEM manufacturers equipment. High quality copper and brass construction provide optimum performance for welding, brazing and heating applications.



VICTOR® STYLE

MODEL	SIZES
4-MFA	Heating Tip MFA Size #4
6-MFA	Heating Tip MFA Size #6
8-MFA	Heating Tip MFA Size #8
10-MFA	Heating Tip MFA Size #10
12-MFA	Heating Tip MFA Size #12
15-MFA	Heating Tip MFA Size #15
2-MFA-1	Heating Tip MFA-1 Size #2
4-MFA-1	Heating Tip MFA-1 Size #4
6-MFA-1	Heating Tip MFA-1 Size #6
8-MFA-1	Heating Tip MFA-1 Size #8



VICTOR® STYLE

MODEL	SIZES
000-W	W Series Size #000
00-W	W Series Size #00
0-W	W Series Size #0
1-W	W Series Size #1
2-W	W Series Size #2
3-W	W Series Size #3
4-W	W Series Size #4
5-W	W Series Size #5
6-W	W Series Size #6



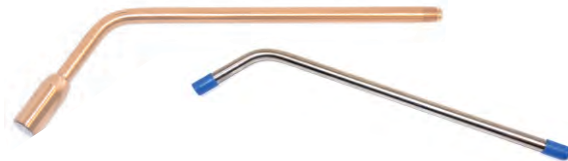
HARRIS® STYLE

MODEL	SIZES	THREAD
2290-1H	Heating Head Size #1-LPG	1/2"-25N
2290-2H	Heating Head Size #2-LPG	1/2"-25N
2290-3H	Heating Head Size #3-LPG	1/2"-25N
2290-4H	Heating Head Size #4-LPG	1/2"-25N
2290-5H	Heating Head Size #5-LPG	1/2"-25N



VICTOR® STYLE

MODEL	SIZES
000-W-1	W-1 Series Size #000
00-W-1	W-1 Series Size #00
0-W-1	W-1 Series Size #0
1-W-1	W-1 Series Size #1
2-W-1	W-1 Series Size #2
3-W-1	W-1 Series Size #3
4-W-1	W-1 Series Size #4
5-W-1	W-1 Series Size #5
6-W-1	W-1 Series Size #6



HARRIS® STYLE

MODEL	DESCRIPTION	THREAD
J-63-1	Harris Style Rosebuds	23/64"-26
J-63-2	Harris Style Rosebuds	23/64"-26
2393-2F	Tip Tube Elbow 28"	1/2"-25N
2393-3F	Tip Tube Elbow 16"	1/2"-25N



HARRIS® STYLE

MODEL	SIZES	THREAD
23A90-00	Welding Tip Size #00	23/64"-26
23A90-0	Welding Tip Size #0	23/64"-26
23A90-1	Welding Tip Size #1	23/64"-26
23A90-2	Welding Tip Size #2	23/64"-26
23A90-3	Welding Tip Size #3	23/64"-26
23A90-4	Welding Tip Size #4	23/64"-26
23A90-5	Welding Tip Size #5	23/64"-26
23A90-6	Welding Tip Size #6	23/64"-26



HARRIS® STYLE

MODEL	DESCRIPTION	THREAD
E-43	Harris Style Mixer	23/64"-26
E2-43	Harris Style Mixer	1/2"-25N

HARRIS® is a registered trademark of The Lincoln Electric Company. VICTOR® and PUROX® are registered trademarks of Esab Welding and Cutting Products. SMITH® is a registered trademark of ITW Welding. Powerweld is in no way affiliated with these original equipment manufacturers.

REPLACEMENT GAUGES



- Premium quality replacement gauges are the industry standard.
- Polished drawn brass with one-piece impact resistant polycarbonate posilock lens.
- For use with compressed gas regulators, these gauges are an excellent choice for original equipment and replacement applications.
- Gauges are UL listed.



DESCRIPTION			
SIZE	PSI	PART # 1/4" NPT	PART # 1/8" NPT
2 1/2"	30	A30	-
	60	A60	-
	100	A100	-
	200	A200	-
	400	A400	-
	4000	A4000	-
2"	30	B30	B30-8
	60	B60	B60-8
	100	B100	B100-8
	200	B200	B200-8
	400	B400	B400-8
	600	B600	-
	4000	B4000	B4000-8
	700	B700	-
	6000	B6000	-
	30 CFH	-	R-CFH
1 1/2"	30	-	C30
	CONTENTS	-	CCG
	60	-	C60
	100	-	C100
	200	-	C200
	400	-	C400
1 1/2"	4000	-	C4000
2"	COVER	LEX15	Lexan Gauge Cover
2"	COVER	LEX2	Lexan Gauge Cover
2 1/2"	COVER	LEX25	Lexan Gauge Cover

BALLOON FILLERS

PACKAGING: 10 per carton



BALLOON INFLATOR	
MODEL	STYLE
GD92	DELUXE

Deluxe Balloon Inflator GD92

Rugged all brass body, "Piston Type" mechanism, drilled and tapped for tie hook and string cutter. Body contains an additional 1/4" NPT port to accommodate a second filler valve if desired. Plastic hand tight CGA 580 inlet connection with sintered bronze inlet filter.

1-1/2" rear entry cylinder contents gauge. Rubber tilt valve.



BALLOON INFLATOR	
MODEL	STYLE
GD95	MYLAR

Balloon Inflator Mylar GD95

GD95 is suitable for filling standard latex and auto-fill mylar balloons.

Rugged all brass body and "Piston-Type" mechanism. Drilled and tapped for a tie hook and a ribbon cutter.

Automatic shut-off mylar filler to prevent over filling and bursting of expensive mylar balloon. Large plastic hand tight CGA 580 inlet connection with sintered bronze inlet filter. 1-1/2" rear entry color-coded cylinder contents gauge.



BALLOON INFLATOR	
MODEL	STYLE
GD93	ECONOMY

Balloon Inflator Economy GD93

Features straight through construction, rugged brass body, "Piston Type" mechanism.

Hand tight CGA 580 inlet connection with sintered bronze inlet filter. Rubber tilt valve.



BALLOON INFLATOR	
MODEL	STYLE
GD232	TILT VALVE

TWIN & SINGLE HOSE

TWIN WELDING HOSE GRADES R & T



SIZE ID	LENGTH	DESCRIPTION	GRADE R ITEM #	GRADE T ITEM #
3/16"	600' Reel	Twin Oxygen/Fuel Hose (Reels)	316TR	316TT
1/4"	600' Reel	Twin Oxygen/Fuel Hose (Reels)	14TR	14TT
5/16"	600' Reel	Twin Oxygen/Fuel Hose (Reels)	516TR	516TT
3/8"	600' Reel	Twin Oxygen/Fuel Hose (Reels)		38TT

Green hose for Oxygen
Red hose for Acetylene
Heat resistant EPDM tube and cover. 2 spiral polyester yarn reinforcement, more flexible than braid reinforced hose, easier to coil and handle. Conforms to RMA/CGA specifications. Working pressure 200 PSI, 1.38 Mpa



DESCRIPTION	LENGTH	GRADE R ITEM #	GRADE T ITEM #
3/16" Twin Welding Hose Assemblies	12.5'	PW316-12	
3/16" Twin Welding Hose Assemblies	25'	PW316-25	
3/16" Twin Welding Hose Assemblies	50'	PW316-50	
3/16" Twin Welding Hose Assemblies	100'	PW316-100	
1/4" Twin Welding Hose Assemblies	12.5'	PW14-12	
1/4" Twin Welding Hose Assemblies	25'	PW14-25	PW14-25T
1/4" Twin Welding Hose Assemblies	50'	PW14-50	PW14-50T
1/4" Twin Welding Hose Assemblies	100'	PW14-100	PW14-100T
5/16" Twin Welding Hose Assemblies	25'	PW516-25	PW516-25T
5/16" Twin Welding Hose Assemblies	50'	PW516-50	PW516-50T
5/16" Twin Welding Hose Assemblies	100'	PW516-100	PW516-100T
3/8" Twin Welding Hose Assemblies	25'		PW38-25T
3/8" Twin Welding Hose Assemblies	50'		PW38-50T
3/8" Twin Welding Hose Assemblies	100'		PW38-100T

SINGLE ACETYLENE HOSE ASSEMBLY



SINGLE HOSE GRADE R

SIZE ID	LENGTH	DESCRIPTION	ITEM # OXYGEN	ITEM # ACETYLENE
3/16"	800' Reel	Single line hose	316OX	316AC
1/4"	800' Reel	Single line hose	14OX	14AC
5/16"	600' Reel	Single line hose	516OX	516AC
3/8"	600' Reel	Single line hose	38OX	38AC

ITEM #	DESCRIPTION
AH12A	3/16"X12' A-A
AH12B	3/16"X12' B-B
AH25A	3/16"X25' A-A



GREEN GP/OXYGEN HOSE

SIZE ID	LENGTH	O.D. (in.)	WORKING PRESSURE	ITEM #
1/2"	600' Reel	15/16"	300	12OX

SINGLE ARGON HOSE

ITEM #	DESCRIPTION
PW-AH6	1/4" x 6' black inert hose assembly
PW-AH10	1/4" x 10' black inert hose assembly
PW-AH25	1/4" x 25' black inert hose assembly
PW-AH50	1/4" x 50' black inert hose assembly
PW-AH100	1/4" x 100' black inert hose assembly
PW-AHBULK	1/4" black inert hose bulk 800' reel

SINGLE AIR HOSE



ITEM #	DESCRIPTION
PW38A25R	25' Rubber Air Hose
PW38A50R	50' Rubber Air Hose
PW38A100R	100' Rubber Air Hose

Pre-assembled 1/4" I.D. inert hose assemblies for MIG and TIG applications. 5/8"-18 RH male connections at each end. Maximum working pressure - 200 PSI. Available from stock in five popular lengths.

PROPANE EQUIPMENT

WEED BURNERS



MODEL	STYLE
PW-500PT	PROPANE

PW-500PT Propane Multi-Torch

Can be used wherever a large volume of heat is needed. Uses: weed burning, drying, thawing frozen pipes and equipment, melting snow, ice, asphalt repair, removal of parking lot markings, paint removal plus many other applications. Runs on standard clean burning propane gas. Connects to standard LP cylinders - no regulator required. Torch produces 500,000 BTU of heat. Solid steel head, 30" handle and solid brass needle control valve. Included with the torch is a 10' CSA approved LPG hose assy, POL excess flow control connector, and a single flint striker. Specs: Capacity: 500,000 BTU Wt. 5.5lbs Length 37"

PW-500PTA Hose assy 10' w/ pressure reducer

PW-500PTPR Pressure Reducer POL 9/16-18N PW-500PT



MODEL	STYLE
PW-501PT	PROPANE

HEAVY DUTY version features a cast iron and steel torch head for demanding applications.

PROPANE TORCHES



PW506

PROPANE HEATING TORCH

Uses include:

Soldering, Brazing, Annealing, Straightening and Bending Plates, Pipes and Bars
Preheating in Welding Jobs, Drying Molds, Thawing Jobs, Roofing and Asphalt Work.

Includes three heating heads.

Length: 500mm

Head size: 25mm, 38mm, 50mm



PW507

PROPANE HEATING TORCH

Brass tube with stainless heating nozzle
Used for applications requiring large volumes heat.

At the pressure lever, operator can go from pilot flame to full-brush flame

Length: 860mm

Head size: 60mm



PROPANE REGULATOR

GR-333

HIGH PRESSURE PROPANE REGULATOR

Delivery pressure adjustable from 0-30 psi

Inlet - CGA-510 POL connection with excess flow control

Outlet 9/16"-18 L.H. male "B" connection

Capacity 1,500,000 BTU/hr

Suitable for torches, construction heaters, tar pots and other industrial applications

PROPANE EQUIPMENT

AUTO IGNITE PROPANE TORCH

Self-igniting torch for use with propane or MAPP® gas. Instant on/off trigger igniter for simple one hand operation. Adjustable swirl flame control knob. Durable cast aluminum body. Lock button to maintain flame. Compatible with small disposable cylinders - CGA-600 connection.

MODEL	STYLE
PW8000T	PROPANE



PROPANE HOSE ASSEMBLIES

Factory made assemblies available in 1/4" and 3/8" I.D.
U.L. / C.S.A. Approved Type I
9/16"-18 L.H. female "B" connections on both ends
Temperature Range -60°F to 212°F (-51° C to 100° C)
Pressure rating up to 350 psi

I4C120FWFW	1/4" X10' B-B
I4C300FWFW	1/4" X25' B-B
I4C600FWFW	1/4" X50' B-B
I6C120FWFW	3/8" X10' B-B
I6C300FWFW	3/8" X10' B-B
I6C600FWFW	3/8" X50' B-B



CYLINDER CARTS

BOXED CARTS



CYT-6SH
6" rubber wheels
41" H x 22" W
Base: 8" x 15.75"
Holds 40 cu. ft. (B) acetylene
and 40 -80 cu. ft. oxygen
Side by side
Load Capacity: 220 lbs

MODEL	CYLINDERS
CYT-6SH	SMALL



CYT-8CH
8" rubber wheels
41" H x 26" W
Base: 10" x 18.5"
Holds 75-145 cu. ft. acetylene
and 120-244 cu. ft. oxygen
Side by side
Load Capacity: 285 lbs

MODEL	CYLINDERS
CYT-8CH	MEDIUM



EASY TO SHIP
EASY TO STOCK
EASY TO ASSEMBLE

Boxed cylinder carts make sense.
Easy to ship and easy to stock.



CYT-14CH
14" rubber wheels
44.5" H x 32.5" W
Base: 13" x 25"
Holds 145-250 cu. ft.
acetylene and 244-330 cu.
ft. oxygen
Side by side
Load Capacity: 440 lbs

MODEL	CYLINDERS
CYT-14CH	LARGE



CYT-8CH-1
8" rubber wheels
41" H x 26" W
Base: 9.5" x 18"
Holds 75-145 cu. ft.
acetylene and 120-244
cu. ft. oxygen
Tandem - front to back
Load Capacity: 285 lbs

MODEL	CYLINDERS
CYT-8CH-1	MEDIUM



CYT-81CH-1
8" rubber wheels
44" H x 12" W
Base: 8" x 10"
Holds 80-330 cu. ft.
high pressure cylinder
Load Capacity: 110 lbs

MODEL	CYLINDERS
CYT-81CH-1	SINGLE

WELDED CARTS



CC38
6" rubber wheels
41" H x 22" W
Base: 8" x 15.75"
Holds 40 cu. ft. (B)
acetylene and 40 -80
cu. ft. oxygen
Side by side
Load Capacity: 220 lbs

MODEL	CYLINDERS
CC38	SMALL



CC4-10
8" rubber wheels
41" H x 26" W
Base: 10" x 18.5"
Holds 75-145 cu. ft.
acetylene and 120-244
cu. ft. oxygen
Side by side
Load Capacity: 285 lbs

MODEL	CYLINDERS
CC4-10	MEDIUM



CC6110
8" rubber wheels
44" H x 12" W
Base: 8" x 10"
Holds 80-330 cu. ft.
high pressure cylinder
Load Capacity: 110 lbs

MODEL	CYLINDERS
CC6110	SINGLE



CC2-14
14" rubber wheels
44.5" H x 32.5" W
Base: 13" x 25"
Holds 145-250 cu. ft.
acetylene and 244-330 cu.
ft. oxygen
Side by side
Load Capacity: 440 lbs

MODEL	CYLINDERS
CC2-14	LARGE



CC2-16
16" pneumatic tires
44.5" H x 32.5" W
Base: 13" x 25"
Holds 145-250 cu. ft.
acetylene and 244-330 cu.
ft. oxygen
Side by side
Load Capacity: 440 lbs

MODEL	CYLINDERS
CC2-16	LARGE



CC79
8" rubber wheels
41" H x 26" W
Base: 9.5" x 18"
Holds 75-145 cu. ft.
acetylene and 120-244
cu. ft. oxygen
Tandem - front to back
Load Capacity: 285 lbs

MODEL	CYLINDERS
CC79	MEDIUM

RETRACTABLE HOSE REELS

HEAVY DUTY MANUAL TWIN WELDING HOSE REEL



MHR100

Spring Tension Brake keeps the reel from "free spinning" after you've stopped pulling out the hose.
3' PowerWeld 1/4" Grade 'T' connector hose included
Hose assembly not included
Heavy-duty steel frame construction
Corrosion resistant powder coating
Solid brass swivel
Mounts on any flat surface
Working Pressure: 300PSI
Hose Capacity 1/4" - 100'
Reel Diameter 12-1/2"
Reel Width 13-1/2"
Overall Height 16"
Weight 13 lbs
Base Plate Size 4-1/4" x 4-1/4"

MODEL	STYLE
MHR100	MANUAL / TWIN Hose not included

HEAVY DUTY AUTO RETRACTABLE TWIN WELDING HOSE REELS C/W HOSE



RHR50

Includes PowerWeld 1/4" X 50' Grade 'T' Hose for use with all fuel gases.
Industrial grade steel reel
Leak proof double O-ring seals
Four direction non-snag rollers
Multiple mounting positions
Whip and hose stop
Working Pressure: 300PSI
Reel diameter 17"
Reel width 4-1/2"
Overall height 19-1/4"
Weight 39 lbs
Base Plate Size 6" x 6"

MODEL	STYLE
RHR50	RETRACTABLE - 50' Hose included

HEAVY DUTY AUTO RETRACTABLE AIR HOSE REELS C/W HOSE



AHR3850

Auto Retractable Heavy-duty steel frame construction
Corrosion resistant powder coating
Spring tension brake, solid brass swivel
Four direction non-snag rollers
Whip and hose stop
Mounts on flat surface - ceiling, wall, floor
Includes: 3 feet connector pigtail hose with standard 1/4" NPTM fittings
Working Pressure: 300PSI
Reel Diameter: 17"
Reel Width: 4-1/2"
Height: 19-1/4"
Hose Length Capacity (FT): 3/8" x 50'
Weight 40 lbs
Base Plate Size 8-5/8" x 5/3/4"

MODEL	STYLE
AHR3850	RETRACTABLE-AIR Hose included



RHR100

Includes PowerWeld 1/4" X 100' Grade 'T' Hose for use with all fuel gases.
Industrial grade steel reel
Leak proof double O-ring seals
Four direction non-snag rollers
Multiple mounting positions
Whip and hose stop
Working Pressure: 300PSI
Reel diameter 19.5"
Reel width 5-1/2"
Overall height 23"
Weight 61 lbs
Base Plate Size 7-1/8" x 5-3/4"

MODEL	STYLE
RHR100	RETRACTABLE - 100' Hose included

HOSE REPAIR KITS



PW-82 B-size kit for 3/16" & 1/4" ID hoses. Offers 12 different items most commonly used for hose repair. Comes complete with PW1098 pincers, and circle clamps.

MODEL	SIZE
PW-82	3/16", 1/4"



PW38HRK HOSE REPAIR KIT
FOR 3/8" ID HOSE

MODEL	SIZE
PW38HRK	3/8"

CIRCLE BURNER

Comes with tip holders to fit most popular cutting torch models.
Cuts circles 4-1/2" to 28" in diameter



MODEL	STYLE
I-69-6	UNIVERSAL

TIP CLEANER



Use to wipe and polish the critical orifice wall of cutting tips. For heavy-duty use. Includes 13 stainless steel reamers and file. Comes in an aluminum case. Cleans drill sizes from 49 to 77.

MODEL	STYLE
TC-1	TIP CLEANER

TIP DRILL KIT



MODEL	DESCRIPTION
PWTDK	TIP DRILL KIT



MODEL	STYLE
20T	PROPANE

Propane Key



MODEL	STYLE
250T	POL

POL Acetylene
Cylinder Key

HOSE CLAMP PINCERS



Portable and lightweight, used for pinching and removing ear clamps.

MODEL	STYLE
PW1098	CRIMP PLIERS

CYLINDER CAPS



Cylinder caps for high pressure and acetylene. All cylinder caps are zinc plated to prevent rusting.

MODEL	STYLE
318-11	HIGH PRESSURE FINE THREAD
312-11	ACETYLENE FINE THREAD
318-7	HI-PRESSURE COARSE THREAD
312-8	ACETYLENE COARSE THREAD

CYLINDER WRENCHES



MODEL	STYLE
5	B & MC

B & MC Tank Key
Double Ended



MODEL	STYLE
1013	10 WAY

10-Way Cylinder Wrench
• For regulators, torches and cylinders
• Drop-forged
• Special alloy steel

ELECTRODE HOLDERS

TWIST TYPE



- Lightweight - easy to use
- Better maneuverability - great for tight places
- Excellent for vertical welding
- Grips the electrode nearer to the end
- Allows use of 20% more of the electrode

TWIST STYLE

MODEL	AMPS
PW4B	400
PW6B	600



REPLACEMENT HEADS

MODEL	AMPS
PWRK-4	400
PWRK-6	600

JAW TYPE

- Made from a high copper alloy for maximum conductivity and strength
- Long top and bottom tip insulators are fibreglass to withstand intense heat and impact
- Suitable for heavy duty applications
- Oval-point screw cable connections on all models

TWECO® STYLE

MODEL	AMPS
A532	200
A316	250
A732	300
A14	350



LENCO® STYLE

MODEL	AMPS
RAF-200	200
RAF-250	250
RAF-300	300
RAF-350	350
RAF-500	500



GROUND CLAMPS



TWECO® STYLE

MODEL	AMPS
EL-200	200
EL-300	300
EL-500	500

- Manufactured from hot dip galvanized steel with forged brass conductors.
- Heavy-duty springs provide positive strength at jaws
- Braided copper strap



ALERCO® STYLE

MODEL	AMPS
AGC-200	200
AGC-300	300
AGC-500	500

- Manufactured from heavy-duty nickel-plated steel with forged brass conductors and braided copper strap
- Heavy-duty spring provide positive strength at jaws
- Cable is easy to install with built-in cable connector and oval point screw



LENCO® STYLE

MODEL	AMPS
GR-200	200
GR-300	300
GR-500	500

- Manufactured from high copper alloy assures excellent current carrying ability
- Large contact area
- Serrated upper and lower jaws
- Mechanical oval-point screw cable connection



JACKSON® STYLE

MODEL	AMPS
GC-2	200
GC-3	300
GC-5	500

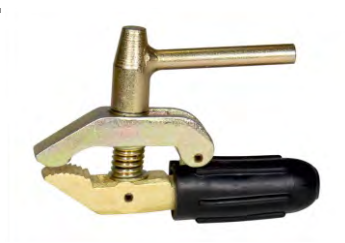
- Double lock clamps have forged copper alloy conductors
- High clamping pressure and long finger-grip levered handles for easy jaw opening

TWECO® STYLE

MODEL	AMPS
GCT-200	200
GCT-300	300
GCT-500	500

- Manufactured from 98% copper alloy with forged brass conductors
- Heavy-duty fully insulated springs provide positive strength at jaws

SPECIALIZED GROUND CLAMPS



- Heavy duty screw type ground clamp
- Jaws are adjusted by screw lever
- Rubber insulated cable connector

SCREW TYPE	
MODEL	AMPS
GCC-600	600



- Design for MIG welding process
- Powerful bite and swivel pad
- Full 2" opening with a copper coated steel pressure screw
- Cable attaches with two oval-point screws and comes with connector insulator

"C" CLAMP TYPE	
MODEL	AMPS
ECWG60C	600



- Manufactured from nickel-plated steel with forged brass conductors
- Large contact area with strong gripping power
- Insulated to prevent annealing
- Easy installation or removal

ROTARY MAGNETIC	
MODEL	AMPS
ECM50R	500



- Manufactured from nickel-plated steel
- Large copper contact shunt
- High amperage capacity
- Handle for easy removal

ROTARY MAGNETIC	
MODEL	AMPS
ECM80H	800



- Manufactured from nickel-plated steel with forged brass conductors
- Large contact area with strong gripping power
- Insulated to prevent annealing
- Easy installation or removal
- Swivel connector for welding cable

ROTARY MAGNETIC	
MODEL	AMPS
ECM60R	600



ECR800-2



ECR1000-2

- Heavy duty forged brass construction
- Two cable connectivity for efficient grounding connection
- Outer face revolves with full swivel action
- Strong tension spring to ensure maximum connection
- Easy installation or removal

ROTARY "C" CLAMP	
MODEL	AMPS
ECR800-2	800
ECR1000-2	1000



ECR600L

- Solid Brass construction
- 600 amp capacity
- Smooth rotation
- 3 angle body positions

ROTATING CLAMP	
MODEL	AMPS
ECR600L	600

CABLE LUGS & SPLICERS



HAMMER ON LUG

PART #	CABLE SIZE
RL11	SIZE 3/0 TO 4/0
RL22	SIZE 1/0 TO 2/0
RL33	SIZE 4 TO 1

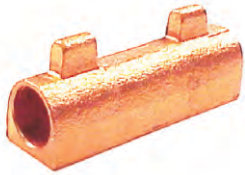
- Manufactured from heavy wall cast copper alloy, annealed for maximum conductivity
- Fast, easy installation - just slide in cable and strike it with hammer for durable connection



HAMMER SPLICER

PART #	CABLE SIZE
RS11	SIZE 3/0 TO 4/0
RS22	SIZE 1/0 TO 2/0
RS33	SIZE 4 TO 1

- Manufactured from heavy wall cast copper alloy, annealed for maximum conductivity
- Long length and flared ends make installation fast and easy



SOLDER SPLICER

PART #	CABLE SIZE
RS3040	SIZE 3/0 TO 4/0
RS1020	SIZE 1/0 TO 2/0
RS12	SIZE 4 TO 1

SOLDER LUG

PART #	CABLE SIZE
RL3040	SIZE 3/0 TO 4/0
RL1020	SIZE 1/0 TO 2/0
RL12	SIZE 4 TO 1

Mechanical cable splicers incorporate hex-screws for solid connection and an insulated cover for safety

MODEL	CABLE SIZE
CS-610	#4-1/0
CS-2040	2/0-4/0



- Easy to use crimping tool
- Takes any size of solder type lug
- Simply use a hammer to do the job
- Good permanent connection
- Spring return

MODEL	STYLE
RL-CRIMP	UNIVERSAL

CHIPPING HAMMERS

SPRING HANDLE STEEL SHAFT

- Similar to Lenco® LHC-1
- Similar to Atlas HCP
- Wire spring handle
- Drop forged heat treated head
- Welded-on head - Cannot come loose

SPRING HANDLE STEEL SHAFT

- Most popular model
- Similar to Lenco® LH-1
- Similar to Atlas H
- Wire spring handle
- Drop forged heat treated head
- Welded-on head - Cannot come loose



CHIPPING HAMMER

MODEL	STYLE
RLHC-1	POINT/CROSS CHISEL



CHIPPING HAMMER

MODEL	STYLE
RLH-1	POINT/CHISEL

WOOD HANDLE

- Similar to Lenco® LWHH
- Similar to Atlas WH-20
- Similar to Atlas WH-30
- Drop forged heat treated heads attached to handle with steel and wood wedges

CHIPPING HAMMER

MODEL	STYLE
RLHWH-20	POINT/CHISEL
RLHWH-30	POINT/CROSS CHISEL

WOOD HANDLE STEEL SHAFT

- Similar to Lenco® LHW-1
- Similar to Atlas J
- This model has the wood handle preferred by many welders
- Drop forged heat treated head
- Welded-on head - Cannot come loose

CHIPPING HAMMER

MODEL	STYLE
RLHW-1	POINT/CHISEL



CABLE CONNECTORS

Designed to efficiently conduct the current through a detachable type connector. Brass bodies are precision machined. Cam action design allows lock in with a twist and pulls the two halves together tightly. Connector covers are resistant to heat, cold, abrasion, ozone, oils & solvents. Tapered ends lock out moisture, oil and dirt. Connector covers are specially compounded to be flame retardant.

LENCO® STYLE

PART #	DESCRIPTION	SUITABLE FOR CABLE SIZES	PKG
LC40	Complete Connector	#1 - 4/0	50 / CS
LC40M	Male Half	#1 - 4/0	100 / CS
LC40F	Female Half	#1 - 4/0	100 / CS
LC40HD	Heavy Duty Connector	#1/0 - 4/0	50 / CS
LC10	Complete Connector	#4 - #1	50 / CS
LC10M	Male Half	#4 - #1	100 / CS
LC10F	Female Half	#4 - #1	100 / CS
LS40	Black Sleeve only	N/A	50 / CS
LS40B	Blue Sleeve only	N/A	50 / CS
LS40R	Red Sleeve only	N/A	50 / CS
LS40Y	Yellow Sleeve only	N/A	50 / CS
LC1040M	Whip Connector	#4 - #1	100 / CS



- Positive lock-tight action
- Brass bodies are precision machined from heavy specially shaped brass extrusion
- Cam action design of male half connector pulls the two halves tightly together
- Compatible with Lenco® and other popular style connectors

DINSE® STYLE

PART #	DESCRIPTION	SUITABLE FOR CABLE SIZES	PKG
CCD1025	Complete Connector	#4 - #2	50 / CS
CCD1025-M	Male Half	#4 - #2	100 / CS
CCD1025-F	Female Half	#4 - #2	100 / CS
CCD3550	Complete Connector	#2 - 1/0	50 / CS
CCD3550-M	Male Half	#2 - 1/0	100 / CS
CCD3550-F	Female Half	#2 - 1/0	100 / CS
CCD5070	Complete Connector	2/0 - 4/0	50 / CS
CCD5070-M	Male Half	2/0 - 4/0	100 / CS
CCD5070-F	Female Half	2/0 - 4/0	100 / CS



- Popular Dinse® Style connector
- Positive lock-tight action
- Brass parts are precision machined from heavy specially shaped brass extrusion
- Cam action design of male half connector pulls the two halves tightly together

TWECO® STYLE

PART #	DESCRIPTION	SUITABLE FOR CABLE SIZES	PKG
1MBP	Complete Connector	#4 - #1	50 / CS
2MBP	Complete Connector	1/0 - 2/0	50 / CS
2MBP-M	Male Half	1/0 - 2/0	100 / CS
2MBP-F	Female Half	1/0 - 2/0	100 / CS
4MBP	Complete Connector	3/0 - 4/0	50 / CS



- Positive lock-tight action
- Brass parts are precision machined from heavy specially shaped brass extrusion
- Cam action design of male half connector pulls the two halves tightly together
- Compatible with Tweco® and other popular style connectors

TERMINAL CONNECTIONS

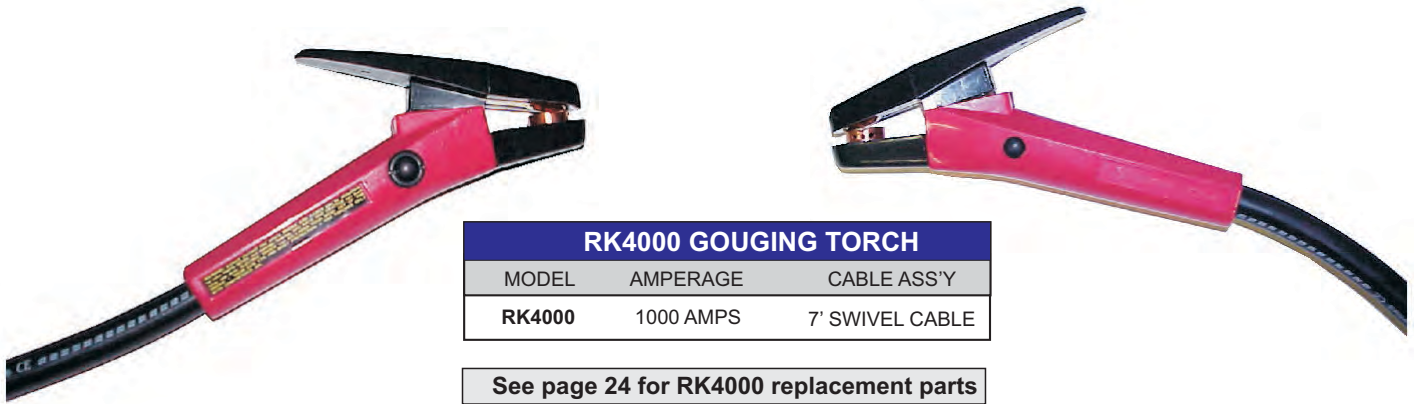
PART #	DESCRIPTION	SUITABLE FOR CONNECTOR	PKG
TE-1AF	45° Terminal	LC10	50 / CS
TE-2AF	45° Terminal	LC40	50 / CS
TE-20F	180° Terminal	LC40	50 / CS
TE-A-3595	45° Dinse	CCD3550	50 / CS
DA-5095	Adaptor - Dinse Male, LC40F		



- Positive lock-tight action
- Brass parts are precision machined from heavy specially shaped brass extrusion
- Terminal connectors replace cable lugs for fixture to machines allowing for quick disconnect of cables

GOUGING TORCH

For gouging, cutting, beveling, piercing and flushing metal. The Gouging Torch is designed to remove any kind of metal by the "Air Carbon-Arc" process which is more economical than older methods such as burning, chipping and grinding.



RK4000 GOUGING TORCH

MODEL	AMPERAGE	CABLE ASS'Y
RK4000	1000 AMPS	7' SWIVEL CABLE

See page 24 for RK4000 replacement parts

POINTED & FLAT GOUGING CARBONS

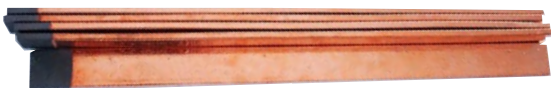
Used for gouging out defective welds and cutting non-ferrous metals. Consistent copper coating insulates against side burn through, offers improved conductivity. Electrodes are 12" in length.



COPPER COATED DC POINTED GOUGING CARBONS

Item #	Packaging	Size (Inches)	Size (MM)
DC18	100 per box	1/8" X 12"	3.2mm X 305mm
DC532	50 per box	5/32" X 12"	4.0mm X 305mm
DC316	50 per box	3/16" X 12"	4.8mm X 305mm
DC14	50 per box	1/4" X 12"	6.4mm X 305mm
DC516	50 per box	5/16" X 12"	7.9mm X 305mm
DC38	50 per box	3/8" X 12"	9.5mm X 305mm
DC12	50 per box	1/2" X 12"	12.7mm X 305mm

Carton Packaging: 1/8" Diameter - 500 per Carton - All other sizes - 250 per Carton



COPPER COATED DC FLAT GOUGING CARBONS

Item #	Packaging	Size (Inches)	Size (MM)
DCF38532	50 per box	3/8"X5/32" X 12"	9.5mm X 4.0mm X 305mm
DCF58316	50 per box	5/8"X3/16" X 12"	15.9mm X 4.8mm X 305mm

Carton Packaging: 1/8" Diameter - 500 per Carton - All other sizes - 250 per Carton

JOINTED GOUGING CARBONS

- Eliminates stub loss and provides continuous electrode feed especially for semi-automatic torches
- Machined at each end to provide male and female fit up
- Used for gouging out defective welds and cutting non-ferrous metals
- Consistent copper coating insulates against side burn through, offers improved conductivity
- Electrodes are 17" in length



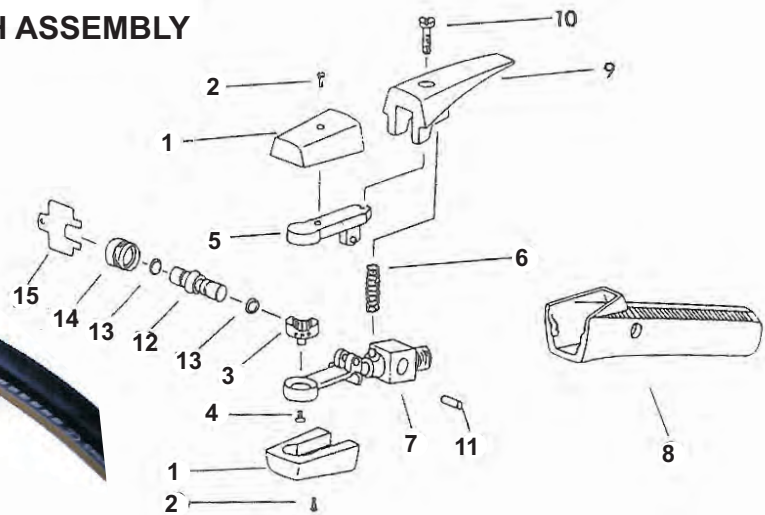
COPPER COATED DC JOINTED GOUGING CARBONS

Item #	Packaging	Size (Inches)	Size (MM)
DCJ-38	50 per box	3/8" X 17"	9.5mm X 440mm
DCJ-12	50 per box	1/2" X 17"	12.7mm X 440mm
DCJ-58	25 per box	5/8" X 17"	15.9mm X 440mm
DCJ-34	25 per box	3/4" X 17"	19.1mm X 440mm



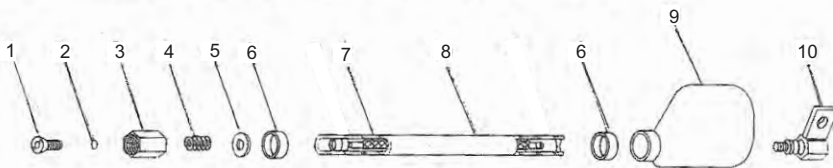
RK4000 REPLACEMENT PARTS

TORCH ASSEMBLY

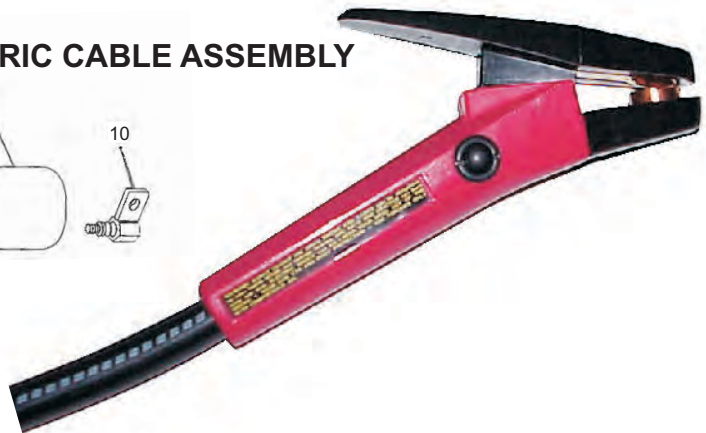


- | | | |
|----|------------|--------------------------|
| 1 | 94-433-183 | Insulators & Screws (pr) |
| 2 | 97-142-009 | Screw for Insulators |
| 3 | 94-378-368 | Head Assembly |
| 4 | 97-192-022 | Screw for Head Assembly |
| 5 | 94-048-088 | Upper Arm |
| 6 | 94-800-077 | Spring |
| 7 | 94-103-206 | Body |
| 8 | 94-370-163 | Handle - RK4000 |
| 9 | 94-476-066 | Lever |
| 10 | 97-192-125 | Screw |
| 11 | 94-632-094 | Hinge Pin |
| 12 | 94-801-011 | Spool with O-Rings |
| 13 | 94-710-036 | O-Ring for Spool (pair) |
| 14 | 94-104-012 | Bonnet |
| 15 | 94-960-001 | Wrench |

70-084-207 - 360° SWIVEL CONCENTRIC CABLE ASSEMBLY



- | | | |
|----|------------|------------------|
| 1 | 94-695-044 | Retainer |
| 2 | 94-710-027 | O-Ring |
| 3 | 94-565-087 | Male Connector |
| 4 | 94-940-104 | Spring |
| 5 | 94-940-103 | Flat Washer |
| 6 | 94-167-010 | Clamp (pair) |
| 7 | 96-130-263 | Conductor Cable |
| 8 | 94-171-274 | Cover |
| 9 | 94-105-014 | Insulating Boot |
| 10 | 94-170-150 | Female Connector |



WELDING CABLE



Convenient Cut Length Cable in Boxes

PowerWeld carries inventory of the most popular welding and primary cable sizes in convenient pre-cut lengths of 50' and 100'. These lengths are attractively boxed and ready to go right off the shelf for clean and trouble free cable sales.

Flex-a-Prene® 30 AWG 600 volt all-weather grade welding cable is rated at -50°C to +105°C giving it outstanding cold weather flexibility. Made with a special jacketing compound, this standard stock welding cable gives you high flexibility without sacrificing weather resistance. **Flex-a-Prene®** welding cable is the first to meet **SAE J1127**, a standard that requires a minimum amount of copper per gauge. To meet this standard, the cable must also pass extensive tests against flame, heat, and cold. These conditions are similar to what welders experience on a daily basis.

Specification Data

AWG SIZE	STRANDING	NOM. INSULATION THICKNESS (INCHES)	NOM. O.D. INCHES	APPROX. POUNDS PER 1000 FEET
6	259 X 30	.060	.320	128
4	364 X 30	.060	.348	162
2	624 X 30	.060	.420	260
1	780 X 30	.080	.503	328
1/0	988 X 30	.080	.533	400
2/0	1235 X 30	.080	.586	490
3/0	1539 X 30	.080	.625	596
4/0	2014 X 30	.080	.720	800

Part #	Size	Description
4-50	50 ft #4	Welding Cable
4-100	100 ft #4	Welding Cable
2-50	50 ft #2	Welding Cable
2-100	100 ft #2	Welding Cable
1-50	50 ft #1	Welding Cable
1-100	100 ft #1	Welding Cable
1/0-50	50 ft #1/0	Welding Cable
1/0-100	100 ft #1/0	Welding Cable
2/0-50	50 ft #2/0	Welding Cable
2/0-100	100 ft #2/0	Welding Cable
3/0-50	50 ft #3/0	Welding Cable
3/0-100	100 ft #3/0	Welding Cable
4/0-50	50 ft #4/0	Welding Cable
4/0-100	100 ft #4/0	Welding Cable
10/3-100	100 ft #10/3	Power Cable
10/4-100	100 ft #10/4	Power Cable

WHIP CABLE ASSEMBLIES

Whip cable is highly flexible with annealed 36 (.005) gauge bare copper conductor, insulated with an orange EPDM jacket and paper separator. Operating temperatures range from -50°C to +105°C (-58°F to +221°F). Rated to 600 volts. Meets or exceeds ASTM B-172.

10 feet #2 cable
with 4B holder and
male connector

WHIP CABLE ASS'Y	
MODEL	STYLE
2-WA	10 FEET #2

10 feet #1 cable
with 4B holder and
male connector

WHIP CABLE ASS'Y	
MODEL	STYLE
1-WA	10 FEET #1



MIG WELDER CARTS



Gas cylinder platform designed to handle up to 6.5" diameter cylinders
The large drawer is 18.9" X 11.9" X 5.5" and designed for tools, angle grinder or drill, the small drawer is 18.9" X 11.9" X 3.2" and designed for contact tips, nozzles, and other smaller items. The drawer slides are ball bearing for easy movement.
Dual side hooks for holding cables, helmets, MIG gun etc.
6" X 1.15" rear wheels and 2.5" X 1" front casters for ease of movement
Top shelf dimensions: 21" x 12.75"
Dimensions- Assembled- 38.6" x 18.5" x 30"
Weight: 52 lbs Load: 150 lbs capacity

MODEL	STYLE
CCMIG-DELUXE	2 DRAWER



EASY TO SHIP
EASY TO STOCK
ASY TO ASSEMBLE

Boxed MIG carts make sense.
Easy to ship and easy to stock.



Folding front handle to reduce footprint and open area to machine controls
Front swivel wheels for easy movement
Side cable wraps keep lead and ground tidy
Bottom shelf for accessories
Cylinder rack with safety chain holds up to 7-1/2" diameter - 80 lb cylinders
Black power coat finish for durability
Fits New Millermatic® 141 and 190 model machines
Top Shelf Dimensions: 12.5" W x 22.5" L
Overall Cart Dimensions: 18.5" W x 26.5" H
Weight Capacity: 110 lbs

MODEL	STYLE
CCMIG-2	2 SHELF



Gas cylinder platform designed to handle up to 7.5" diameter cylinders.
Four drawers for convenient storage of tools, wires helmet and more. The top drawer is 11" X 9.75" X 1.5". Three large drawers are all 11" x 15" with depths of 2.5", 6.5", and 9.5" respectively. The drawer slides are ball bearing for easy movement. Dual side hooks for holding cables, helmets, MIG gun etc.
6" X 1.15" rear wheels and 2.5" X 1" front casters for ease of movement
Top shelf dimensions: 20.25" x 14"
Dimensions- Assembled- 33.5" x 17.5" x 33.5"
Weight: 90 lbs
Load: 150 lbs capacity

MODEL	STYLE
CCMIG-DX4	4 DRAWER



MODEL	STYLE
CCMIG	BLUE

CCMIG Industrial MIG Cart Dimensions:

Heavy Duty Steel Construction
Top Shelf: 17 3/4" L x 11 1/4" W
Middle Shelf: 15 1/4" L x 11 1/4" W
Bottom Shelf: 17 3/8" L x 11 1/4" W
Cylinder Shelf: 10 1/2" L x 11 1/4" W
Cylinder shelf holds from small to larger industrial cylinders
Rear Wheels: 6" x 1 1/4"
Front Swivel Wheels: 2 1/4" x 7/8"
Holds your small MIG welder, gas cylinder plus plenty of room for tools and accessories.
Front handle for easy movement
MIG gun and ground lead holders on sides
Cylinder holding chains
Height: 24 3/4"
Easy to assemble.



MODEL	STYLE
CCMIG-B	BLACK

MIG FLUX CORED WELDER

GAS / NO GAS



COMES COMPLETE WITH:

Gun and cable assembly
6 ft (1.8 m) work cable with clamp
Argon Flowmeter with hose
Sample spool of .030 in (0.8 mm) self shielding flux cored wire.
Spare contact tips
6 ft (1.8 m) Power cord with plug.
Instruction Manual

Dimensions: 18" (470mm) x 9.4" (240mm) x 12.0" (305mm)

Net Weight: 59 lb (27 kg)

Warranty: Two Years



Description: **MM-180E** wire feed welder is designed for maintenance and sheet metal fabrication. The welder consists of a single-phase power transformer, stabilizer, rectifier, and a unique built-in control/feeder. You can weld sheet metal from 24 gauge up to 1/4" thick with a single pass. You can weld thicker steel with bevelling and multiple pass techniques. Tweco® style nozzles and contact tips.

Welder Specifications

Primary (input) Volts:	230 Vac
Primary (input) Amps:	25
Phase:	Single
Frequency:	60HZ
Secondary (output) Volts:	21.3
Secondary (CSA output) Amps:	145
Open Circuit Voltage (Max):	35 Vdc
Duty Cycle Rating:	15%

**230V/25-180 Amps
Welds up to 6.0 mm**

MIG WELDER

MODEL	STYLE
MM-180E	230V

INVERTER WELDER

INVERTER STICK WELDER

CARiARC 90

90 Amp-20% Duty Cycle

120VAC 1 Phase 60Hz

Weight 4.5kg (10lbs)

TWO YEAR WARRANTY



TIG OPTION



RPWP17V2RBD12 TIG Torch
100FL Flowmeter
PWAK-2 Parts Kit

TIG ACCESSORIES

MODEL	STYLE
CA-TIG	ACCESSORIES

CARiARC 90A comes complete with lead cable and electrode holder, ground cable with clamp, shoulder strap and sample electrodes all contained in a sturdy BMC carry case for convenience and portability.

CARiARC 90A

Power Supply (V)	1 ph - 120V - 60HZ
No-Load Voltage (V)	75V
Output Range (A)	20 - 90A
Duty Cycle (%)	20%
Suggested Electrode	E6013, E7014, E7018, E6011
Electrode Diameter (inch)	1/16", 5/64", 3/32"
Length x Width x Height	300mm-120mm-240mm (12"-5"-9")
Welder Weight Kg (lbs)	4.5 kg (9.9 lbs)
Model	CA-90A

INVERTER PLASMA CUTTER

INVERTER PLASMA CUTTER

HC40PLUS
40 Amp-35% Duty Cycle
230VAC 1 Phase 60Hz
Weight 9 kg (21lbs)
TWO YEAR WARRANTY



HC40PLUS PLASMA CUTTER

Power Supply (V)	1 ph - 230V - 60HZ
No-Load Voltage (V)	340V
Output Range (A)	15 - 40A
Duty Cycle (%)	35% @ 40A
Air Pressure	4.5 CFM @ 60 PSI
Power Switch	250 Volts AC 30 Amps
Length x Width x Height	17.7" x 6.7" x 9.0"
Welder Weight (lbs)	9 kg (21 lbs)
Torch Length	5.5m (18.5')
Model	HC-40PLUS

PLASMA PARTS



PWPR0110
Electrode (Pkg 3)



PWPE0106
Gas Diffuser(Pkg 2)



PWPC0116
Outer Cover Cutting
Nozzle (PKG 1)



PWPD011608
Cutting Nozzle
0.8mm (Pkg 3)

HC40PLUS is an IGBT inverter plasma cutter with thermal overload protection, a Trafimet® torch and a built-in gas regulator. This easy to use plasma cutter has the power to cut up to 3/8" materials and a pilot arc that makes cutting expanded metal possible. This machine requires single phase 230 Volt (220V-240V), 60 Hz input power.

TUNGSTEN ELECTRODES



PowerWeld offers eight types of tungsten electrode to cover every TIG welding application. Electrodes are 7" (175mm) in length and packaged 10 rods per box. All tungstens have color coded tips for easy identification, and meet AWS A5.12 specifications. Electrodes are supplied with a smooth, round, bright centerless ground finish.

Type	Dia in. (mm)	Part #	Voltage	Composition	Materials Welded
Pure (EWP)					
Unalloyed tungsten electrodes. Provide good stability when used with alternating current, either balanced wave or continuously high frequency stabilized. Maintain a clean, balled end which is preferred for aluminum and magnesium welding.	0.040(1.0) 1/16(1.6) 3/32(2.4) 1/8(3.2) 5/32(4.0)	PUR040 PUR116 PUR332 PUR18 PUR532	AC	99.5% Tungsten 0.5% Other	Aluminum Magnesium
2% Thoriated (EWTh-2)					
Thoria alloy increases electrode life. Higher electron emissions result in better arc starting and arc stability. Maintains a sharp point. Resistance to tungsten contamination of the weld.	0.040(1.0) 1/16(1.6) 3/32(2.4) 1/8(3.2) 5/32(4.0)	2PC040 2PC116 2PC332 2PC18 2PC532	DC	97.3% Tungsten 1.7%-2.2% Thorium 0.5% Other	Carbon Steel Stainless Steel Nickel Alloy Titanium Copper
Zirconiated (EWZr-1)					
Preferred electrode for applications where tungsten contamination of the weld must be minimized. Performs well with alternating current as it retains a balled end during welding.	0.040(1.0) 1/16(1.6) 3/32(2.4) 1/8(3.2) 5/32(4.0)	ZIR040 ZIR116 ZIR332 ZIR18 ZIR532	AC	99.0% Tungsten 0.15%-0.5% Zirconium 0.5% Other	Aluminum Magnesium
2% Ceriated (EWCe-2)					
Provides easy arc starting, improved arc stability and reduced rate of vaporization or burn-off. Operates well with alternating current or direct current, either polarity.	0.040(1.0) 1/16(1.6) 3/32(2.4) 1/8(3.2) 5/32(4.0)	CER040 CER116 CER332 CER18 CER532	DC AC Inverters	97.3% Tungsten 1.8%-2.2% Cerium 0.5% Other	Carbon Steel Stainless Steel Nickel Alloy Titanium Aluminum
1% Lanthanated (EWLa-1)					
Provides easy arc starting, improved arc stability and reduced rate of vaporization or burn-off. Operates well with alternating current or direct current, either polarity.	0.040(1.0) 1/16(1.6) 3/32(2.4) 1/8(3.2) 5/32(4.0)	RE040 RE116 RE332 RE18 RE532	DC AC Inverters	98.3% Tungsten 0.8-1.2% Lanthanum 0.5% Other	Carbon Steel Stainless Steel Nickel Alloy Titanium Aluminum
1.5% Lanthanated (EWLa-1.5)					
Provides easy arc starting, improved arc stability and significantly reduced tip erosion rate. Operates well with alternating current or direct current, either polarity.	0.040(1.0) 1/16(1.6) 3/32(2.4) 1/8(3.2) 5/32(4.0)	LAN15040 LAN15116 LAN15332 LAN1518 LAN15532	DC AC Inverters	97.8% Tungsten 1.3%-1.7% Lanthanum 0.5% Other	Carbon Steel Stainless Steel Nickel Alloy Titanium Aluminum
2% Lanthanated (EWLa-2)					
Provides easy arc starting, improved arc stability and significantly reduced tip erosion rate. Operates well with alternating current or direct current, either polarity.	0.040(1.0) 1/16(1.6) 3/32(2.4) 1/8(3.2) 5/32(4.0)	LAN20040 LAN20116 LAN20332 LAN2018 LAN20532	DC AC Inverters	97.3% Tungsten 1.8%-2.2% Lanthanum 0.5% Other	Carbon Steel Stainless Steel Nickel Alloy Titanium Aluminum
Tri-Mix (EWG)					
Tri-Mix tungsten electrode (AWS classification EWG) combines three non-radioactive rare earth materials (La2O3, Y2O3, CeO2) into one tungsten. Extensive testing has resulted in the development of an optimum composition blend for a high performing tungsten electrode. Performance features include: Easy arc starting and re-ignition, high arc pressure, very good arc stability, excellent endurance. Suitable for carbon steel, stainless steel, copper and aluminum. AC or DC applications.	0.040(1.0) 1/16(1.6) 3/32(2.4) 1/8(3.2) 5/32(4.0)	TM040 TM116 TM332 TM18 TM532	DC AC Inverters	Tungsten Lanthanum Cerium Yttrium	Carbon Steel Stainless Steel Nickel Alloy Titanium Aluminum

MILD STEEL WIRE & COPPER FREE WIRE

Certified by CWB to CSA W48-Class ER49S-6



Specifications

AWS A5.18 Class ER70S-6

Description

S6 contains high levels of manganese and silicon for stronger deoxidizing power where stringent cleaning procedures are not possible. This wire has been designed to provide X-ray quality porosity-free welds and the highest tensile strength (as welded) of the plain carbon steel wires. The high silicon content increases the fluidity of the weld pool, creating a smoother bead appearance and resulting in minimal post-weld grinding. S6 is excellent where poor fit-ups or rusty and oily plates may be used.

Wire is precision level layer wound.

Applications

Construction work, tanks, truck bodies, farm implements, pipes, steel castings or forgings, shaft build-ups and general shop fabrications.



DIAMETER	SPOOL SIZES					PACKAGING
	1KG (2.2LB)	5KG (11LB)	15KG (33LB)	20KG (44LB)	250KG (550LB)	
0.6mm (.023")	S6061	S6065	S60615			1kg spools are packaged 18 spools per master carton 20kg spools are packaged 60 spools (1200kg) per pallet 250 kg drums are packaged 2 drums (500kg) per pallet
0.8mm (.030")	S6081	S6085	S60815	S60820		
0.9mm (.035")	S6091	S6095	S60915	S60920	S609250	
1.2mm (.045")	S6121	S6125	S61215	S61220	S612250	

Powerweld ER70S-6 Copper Free Welding Wire provides superior welding performance with increased productivity and a healthier work environment. Features include:



- Smooth and stable feeding without liner clogging
- Excellent arc ignition
- Minimal post-weld cleanup
- Low spatter level
- Low fume emission
- Increased performance at higher amperages

PWS60920CF .035" (0.9mm) x 44lb (20kg)

PWS61220CF .045" (1.2mm) x 44lb (20kg)

MILD STEEL TIG RODS

RG45

RG45116	ROD RG45 1/16" X 36"
RG4518	ROD RG45 1/8" X 36"
RG45316	ROD RG45 3/16" X 36"
RG45332	ROD RG45 3/32" X 36"

RG60

RG60116	ROD RG60 1/16" X 36"
RG6018	ROD RG60 1/8" X 36"
RG60316	ROD RG60 3/16" X 36"
RG60332	ROD RG60 3/32" X 36"
RG60532	ROD RG60 5/32" X 36"

ER70S-2

Certified by CWB



S2035	ROD E70S2 .035" X 36"
S2045	ROD E70S2 .045" X 36"
S2116	ROD E70S2 1/16" X 36"
S218	ROD E70S2 1/8" X 36"
S2316	ROD E70S2 3/16" X 36"
S2332	ROD E70S2 3/32" X 36"
S2532	ROD E70S2 5/32" X 36"

ER70S-3

S3116	ROD ER70S3 1/16" X 36"
S318	ROD ER70S3 1/8" X 36"
S3332	ROD ER70S3 3/32" X 36"

ER80S-D2

80SD2045	ROD ER80S-D2 .045" X 36"
80SD2116	ROD ER80S-D2 1/16" X 36"
80SD218	ROD ER80S-D2 1/8" X 36"
80SD2332	ROD ER80S-D2 3/32" X 36"

ER80S-B2

ERSB2-045	ROD ER80S-B2 .045" X 36"
ERSB2-116	ROD ER80S-B2 1/16" X 36"
ERSB2-18	ROD ER80S-B2 1/8" X 36"
ERSB2-332	ROD ER80S-B2 3/32" X 36"

ER90S-B3

ERSB3-116	ROD ER90S-B3 1/16" X 36"
ERSB3-18	ROD ER90S-B3 1/8" X 36"
ERSB3-332	ROD ER90S-B3 3/32" X 36"

ER70S-6

S6035	ROD ER70S6 .035" X 36"
S6045	ROD ER70S6 .045" X 36"
S6116	ROD ER70S6 1/16" X 36"
S618	ROD ER70S6 1/8" X 36"
S6332	ROD ER70S6 3/32" X 36"



PACKAGING: 10# (4.5kg) Tubes, 50# (22.7kg) per carton

FLUX CORED WIRE

E71T-GS ALL POSITION

SELF-SHIELDING - GASLESS

Features

No Shielding Gas Needed
Single Pass Welding of Thin Gauge Galvanized Steel
Excellent for Outdoor Use
Smooth Arc – Minimal Spatter
DC- Straight Polarity
Works Well In Wind

Description

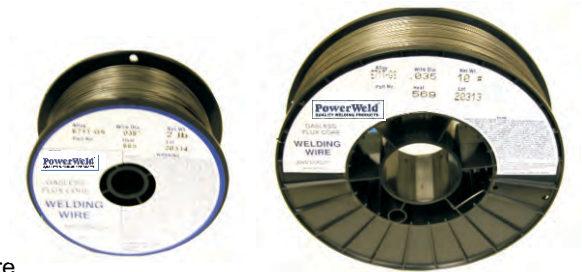
PowerWeld gasless wire E71T-GS is an all-position, self-shielded flux-cored wire designed for single pass fillet and lap welding on galvanized or carbon steel as thin as 20 gauge, without burn-through. Gasless wire E71T-GS is commonly used on small portable 110 volt welding machines, offering smooth arc action with very little spatter. Travel speed is fast, penetration is good and slag removal is easy.

Applications

PowerWeld gasless wire E71T-GS is most popular for the home workshop welder because it works so well on 110 volt machines and can be used on thin gauge steel. Gasless wire E71T-GS is used quite extensively in automobile body shops for door or body repairs and it is also used for sheet metal duct work on lap and butt joints.

NOTE: As with all self-shielded wires, **PowerWeld** gasless wire E71T-GS does contain fluoride compounds, which require more attention to ventilation when being used to weld galvanized steel. The zinc oxide formed during welding should not be inhaled as it can cause metal fume fever. When welding indoors or in an enclosed area, be sure that the ventilation is adequate.

PACKAGING: Spools individually boxed



Item Number	TYPE E71T-GS Diameter / Package
FC0302	.030 Dia. X 2# Spool
FC03010	.030 Dia. X 10# Spool
FC03033	.030 Dia. X 33# Spool
FC0352	.035 Dia. X 2# Spool
FC03510	.035 Dia. X 10# Spool
FC03533	.035 Dia. X 33# Spool
FC0452	.045 Dia. X 2# Spool
FC04510	.045 Dia. X 10# Spool
FC04533	.045 Dia. X 33# Spool

E71T-1C/1M ALL POSITION

PowerWeld E71T-1C/1M is a rutile type flux cored wire designed for general purpose all position welding with 100% CO₂ or a 80% Argon – 20% CO₂ mixture shielding gas. Features excellent welding performance and higher welding efficiency than traditional welding wires with it's smooth arc characteristics, while producing low spatter and low fume emissions. Used for single and multiple pass welding of mild steel and 490 Mpa (70,000 psi) grade high tensile steel. Applications include structural steel fabrication, pressure vessels, bridges, machinery etc.

Classification: E71T-1C/1M per AWS A5.20, ASME SFA5.20

Approvals: CWB to CSA W48-01, E491T-1-H4, E491T-1M-H4

ABS 3YSAH5

LR 3YSH5

DNV III YMS(H5)

BV SA3YMH5

TYPE E71T-1C/1M	
Item Number	Diameter / Package
PW711215	.045" Dia. (1.2mm) X 33# (15kg) Spool
PW711615	1/16" Dia. (1.6mm) X 33# (15kg) Spool



Available Diameters: .045" Dia. (1.2mm), 1/16" Dia. (1.6mm)
Spool Size: 33 lb (15 kg)
Pallet Quantity: 72 spools - 2376 lb (1080 kg)
Welding Current: DC + reverse polarity - electrode positive

MILD STEEL ELECTRODES

PowerWeld 6013



PowerWeld 6013 is a high titania coated electrode. This electrode provides good wetting and shallow penetration for thin sheet metal applications (using smaller diameter electrodes), but with sufficient penetration for welding medium gauge steel. PowerWeld 6013 is an all-purpose electrode that provides a soft steady arc which is easily regenerated, easy slag control for vertical-down welding, low spatter and a beautiful bead appearance. PowerWeld 6013 electrodes may be used in any position with AC or DC (straight or reverse polarity).

Applications

PowerWeld 6013 is commonly used for automobile bodies, truck frames and bodies, ornamental iron, metal furniture, farm implementations, machinery guards, storage tanks, or wherever appearance is important or desirable.

PowerWeld 7014



PowerWeld 7014 is an iron power, rutile type electrode providing high deposition rates and fast travel speed. This electrode provides a stable arc, flat smooth bead appearance and easy slag removability. PowerWeld 7014 is used for all position, single-pass and multi-layer welding applications. AC or DC (straight or reverse polarity) may be used.

Applications

Typical applications include: ship structures, bridges, structural steel for buildings, sheet metal, ornamental iron, auto bodies and fenders, machine parts, storage tanks, etc.

LOW HYDROGEN ELECTRODES

PowerWeld 7018



PowerWeld 7018 is a low-hydrogen electrode for use in all positions on low, medium and high-carbon steels. 70,000 PSI tensile strength. Ideal for out of position welding and tacking. Runs on AC or DCEP (reverse) polarity. Features a steady arc with low spatter and medium penetration, providing X-ray quality weld deposits.

Applications

PowerWeld 7018 is typically used for heavy machinery fabrication, pressure vessels, field and shop welding of bridges and structural steels, cast steels and shipbuilding, or most ASTM specifications on medium carbon and low alloy steels.

PowerWeld 7018AC

PowerWeld 7018AC is a low-hydrogen electrode for use in all positions on low, medium and high-carbons steels. 70,000 PSI tensile strength. Ideal for out of position welding and tacking. Runs on AC or DCEP (reverse) polarity. Specially formulated to operate with small 208/230 volt AC welders.

Applications

Typical applications include general fabrication, tack and skip welds, and for welding thin sections of steel.

ALLOY	PART NUMBER	DIAMETER		LENGTH	
		MM	INCHES	MM	INCHES
E6011 AWS A5.1	PW601125	2.5	3/32	350	14
	PW601132	3.2	1/8	350	14
E6013 AWS A5.1 CWB TO CSA W48 E4313	PW601320	2.0	5/64	300	12
	PW601325	2.5	3/32	350	14
	PW601332	3.2	1/8	350	14
	PW601340	4.0	5/32	350	14
E7014 AWS A5.1	PW701425	2.5	3/32	350	14
	PW701432	3.2	1/8	350	14
	PW701440	4.0	5/32	350	14
E7018 AWS A5.1 CWB TO CSA W48 E4918-1-H8	PW701825	2.5	3/32	350	14
	PW701832	3.2	1/8	350	14
	PW701840	4.0	5/32	350	14
E7018AC AWS A5.1	PW7018AC25	2.5	3/32	350	14
	PW7018AC32	3.2	1/8	350	14
PACKAGING: 2KG (4.4 lbs) Plastic Boxes - 20kg (44 lbs) per Master Case					

STAINLESS MIG WIRE

308L - PowerWeld 308L is used for TIG and MIG welding of unstabilized steels such as types 301, 302, 304, 305, 308. The average carbon content of 0.02% produces a weld deposit with good resistance against intergranular corrosion caused by carbide precipitation. This filler metal is the most popular grade among stainless steels, used for general purpose applications.

309L - PowerWeld 309L is used for the welding of similar alloys in wrought or cast form. It is mostly used for welding dissimilar materials such as mild steel to stainless steel, as well as for a barrier layer in stainless overlays. It has low carbon content of less than 0.03% reduces the possibility of intergranular corrosion. For some applications, welding of straight chromium steels.

316L - PowerWeld 316L is used to weld wrought and cast forms of similar composition, as well as low carbon molybdenum-bearing austenitic alloys. The lower ferrite level of this normal composition reduces the rate of corrosion in certain media and is suitable for use at cryogenic temperatures. The presence of molybdenum increases its creep resistance at elevated temperatures.

All grades meet specification ASME SFA5.9 and are certified by CWB to AWS A5.9

Suggested Welding Parameters for Stainless Steel Welding

MIG Welding: DCEP

Shielding Gas: 98% Argon + 2% Oxygen
Gas Flow: 30 to 50 CFH



Size	Amperage	Voltage
.023"	35 - 70	21 - 26
.030"	50 - 100	24 - 28
.035"	160 - 210	26 - 29
.045"	180 - 250	28 - 32

Diameter	Spool Size	308L	309L	316L
.024" (0.6mm)	2# (0.9kg) spool	308L02402	309L02402	316L02402
	10# (4.5kg) spool	308L02410	309L02410	316L02410
	33# (15kg) spool	308L02433	309L02433	316L02433
.030" (0.8mm)	2# (0.9kg) spool	308L03002	309L03002	316L03002
	10# (4.5kg) spool	308L03010	309L03010	316L03010
	33# (15kg) spool	308L03033	309L03033	316L03033
.035" (0.9mm)	2# (0.9kg) spool	308L03502	309L03502	316L03502
	10# (4.5kg) spool	308L03510	309L03510	316L03510
	33# (15kg) spool	308L03533	309L03533	316L03533
.045" (1.2mm)	2# (0.9kg) spool	308L04502	309L04502	316L04502
	10# (4.5kg) spool	308L04510	309L04510	316L04510
	33# (15kg) spool	308L04533	309L04533	316L04533

PACKAGING: 2 kg (4.4 lbs) boxes, 20 kg (44 lbs) per carton

STAINLESS TIG WIRE

TIG Welding: DCEN

Shielding Gas: 100% Argon
Gas Flow: 30 to 40 CFH

Size	Amperage	Voltage
.035"	60 - 90	12 - 15
.045"	80 - 110	13 - 16
1/16"	90 - 130	14 - 18
3/32"	120 - 175	15 - 20
1/8"	150 - 220	15 - 20

Diameter	308L	309L	316L
.035" (0.9mm)	ER308L-035	ER309L-035	ER316L-035
.045" (1.2mm)	ER308L-045	ER309L-045	ER316L-045
1/16" (1.6mm)	ER308L-116	ER309L-116	ER316L-116
3/32" (2.4mm)	ER308L-332	ER309L-332	ER316L-332
1/8" (3.2mm)	ER308L-18	ER309L-18	ER316L-18

Each TIG rod is stamped with grade for identification.

PACKAGING: 10 pound (4.5kg) tubes

STAINLESS ELECTRODES



PRODUCT DESCRIPTION	DIAMETER / SIZE	ITEM #
E308L-16 STAINLESS STEEL ELECTRODE AWS A5.4 ASME SFA5.4 CLASS E308L-16 AC/DC	3/32 - 2.5mm X 300mm	PW308L25
	1/8 - 3.2mm X 350mm	PW308L32
	5/32 - 4.0mm X 350mm	PW308L40
E309L-16 STAINLESS STEEL ELECTRODE AWS A5.4 ASME SFA5.4 CLASS E309L-16 AC/DC	3/32 - 2.5mm X 300mm	PW309L25
	1/8 - 3.2mm X 350mm	PW309L32
	5/32 - 4.0mm X 350mm	PW309L40
E316L-16 STAINLESS STEEL ELECTRODE AWS A5.4 ASME SFA5.4 CLASS E316L-16 AC/DC	3/32 - 2.5mm X 300mm	PW316L25
	1/8 - 3.2mm X 350mm	PW316L32
	5/32 - 4.0mm X 350mm	PW316L40

PACKAGING: 2 kg (4.4 lbs) boxes, 20 kg (44 lbs) per carton

ALUMINUM ALLOYS

Precision made on the latest equipment from materials of the finest quality. **PowerWeld** spooled aluminum wire is triple degreased to provide the highest degree for cleanliness and luster. The **PowerWeld** "shaved finish" produces absolute uniformity in diameter along with excellent surface smoothness so as to guarantee uninterrupted feeding in automatic and semi-automatic operations.

Rigid quality controls in every stage of manufacture and packaging assure maximum welding and brazing efficiency and trouble free welding results. Unique cleaning methods remove all traces for oxides, lubricants and acids. Special packaging maintains absolute cleanliness and prevents contamination.

With state of the art, proprietary processes and advanced testing capabilities, **PowerWeld** is recognized for our quality aluminum welding products.

ALUMINUM MIG WIRE



SHAVED - TRIPLE DEGREASED PRECISION LEVEL LAYER WOUND

404303001	WIRE MIG .030 X 1# SPOOL
404303005	WIRE MIG .030 X 5# SPOOL
404303013	WIRE MIG .030 X 13# SPOOL
404303016	WIRE MIG .030 X 16# SPOOL
404303501	WIRE MIG .035 X 1# SPOOL
404303505	WIRE MIG .035 X 5# SPOOL
404303516	WIRE MIG .035 X 16# SPOOL
404304501	WIRE MIG .045 X 1# SPOOL
404304516	WIRE MIG .045 X 16# SPOOL
404311616	WIRE MIG 1/16" X 16# SPOOL

535603001	WIRE MIG .030 X 1# SPOOL
535603005	WIRE MIG .030 X 5# SPOOL
535603016	WIRE MIG .030 X 16# SPOOL
535603501	WIRE MIG .035 X 1# SPOOL
535603505	WIRE MIG .035 X 5# SPOOL
535603516	WIRE MIG .035 X 16# SPOOL
535604501	WIRE MIG .045 X 1# SPOOL
535604516	WIRE MIG .045 X 16# SPOOL
535611616	WIRE MIG 1/16" X 16# SPOOL

555404501	WIRE MIG .045 X 1# SPOOL
555404520	WIRE MIG .045 X 20# SPOOL

ALUMINUM TIG WIRE



ER4043-116	WIRE TIG ALUMINUM 1/16" X 36"
ER4043-18	WIRE TIG ALUMINUM 1/8" X 36"
ER4043-332	WIRE TIG ALUMINUM 3/32" X 36"
ER4043-532	WIRE TIG ALUMINUM 5/32" X 36"

ER5356-116	WIRE TIG ALUMINUM 1/16" X 36"
ER5356-18	WIRE TIG ALUMINUM 1/8" X 36"
ER5356-332	WIRE TIG ALUMINUM 3/32" X 36"
ER5356-532	WIRE TIG ALUMINUM 5/32" X 36"

PACKAGING: 10# (4.5kg) Tubes 50# (22.7kg) Cartons

ALUMINUM SOLDER

211118 1/8" x 18" Aluminum Rub-on Solder

Maximum strength, self-fluxing solder for joining, build-up and hardfacing aluminum.

High zinc content gives good color match to aluminum.

No flux required – post cleanup is eliminated.

Low working temperature prevents warpage, distortion and discoloration.



211118

Aluminum Rub-on Solder 1/8" x 18"

COPPER BASED ALLOYS

FLUX COATED BRONZE

AWS A5.8 RBCuZn-C

FC18	ROD FLUX COATED BRONZE 1/8" X 36"
FC316	ROD FLUX COATED BRONZE 3/16" X 36"
FC332	ROD FLUX COATED BRONZE 3/32" X 36"

PACKAGING: 10# (4.5kg) Tubes 50# (22.7kg) Carton



SILICON BRONZE

AWS A5.7 ERCuSi-A

SB025-10	WIRE SILICON BRONZE .025 X 10#
SB025-2	WIRE SILICON BRONZE .025 X 2#
SB030-10	WIRE SILICON BRONZE .030 X 10#
SB030-2	WIRE SILICON BRONZE .030 X 2#
SB030-30	WIRE SILICON BRONZE .030 X 30#
SB035-10	WIRE SILICON BRONZE .035 X 10#
SB035-2	WIRE SILICON BRONZE .035 X 2#
SB035-30	WIRE SILICON BRONZE .035 X 30#
SB035-500	WIRE SILICON BRONZE .035 X 500#
SB045-10	WIRE SILICON BRONZE .045 X 10#
SB045-2	WIRE SILICON BRONZE .045 X 2#
SB045-30	WIRE SILICON BRONZE .045 X 30#

SB116	ROD SILICON BRONZE 1/16" X 36"
SB18	ROD SILICON BRONZE 1/8" X 36"
SB332	ROD SILICON BRONZE 3/32" X 36"

ROD PACKAGING: 10# (4.5kg) Tubes 50# (22.7kg) Carton



BARE BRONZE

AWS A5.8 RBCuZn-C

BB116	ROD BARE BRONZE 1/16" X 36"
BB14	ROD BARE BRONZE 1/4" X 36"
BB18	ROD BARE BRONZE 1/8" X 36"
BB316	ROD BARE BRONZE 3/16" X 36"
BB332	ROD BARE BRONZE 3/32" X 36"
BB532	ROD BARE BRONZE 5/32" X 36"

PACKAGING: 10# (4.5kg) Tubes 50# (22.7kg) Carton



DEOXIDIZED COPPER

AWS A5.7 ERCu

DEOX035-2	DE-OX COPPER WIRE .035" X 2#
DEOX035-30	DE-OX COPPER WIRE .035" X 30#
DEOX045-2	DE-OX COPPER WIRE .045" X 2#
DEOX045-30	DE-OX COPPER WIRE .045" X 30#

DEOX116	DE-OX COPPER TIG ROD 1/16" X 36"
DEOX18	DE-OX COPPER TIG ROD 1/8" X 36"
DEOX332	DE-OX COPPER TIG ROD 3/32" X 36"

ROD PACKAGING: 10# (4.5kg) Tubes 50# (22.7kg) Carton



AUTO DARKENING HELMETS

PROFESSIONAL SERIES



MODEL	STYLE
PWH9855G1	SKULL FLAME IN CLAMSHELL PKG



MODEL	STYLE
PWH9855G3	KLOWN IN CLAMSHELL PKG



MODEL	STYLE
PWH9855G2	BLACK ART IN CLAMSHELL PKG

Auto-Darkening Filter Welding Helmet
Solar Powered - Fully Automatic Power on / off
Conforms to ANSI Z87.1-2003 and Colts CSA Z94.3-07
Variable Shade Infinitely Adjustable 9 – 13
Switching Speed 0.000033 Seconds
Weld / Grind Mode Select Function
Adjustable Sensitivity
Adjustable Delay – Dark to Clear
IR/UV Protection – up to shade DIN 16 at all times
Magnifyer lens holder
Multi-Adjust Headgear for Welder Comfort
Light Weight – 480 g (16.9 oz) - 2 Year Warranty



MODEL	STYLE
PWH9855G4	SKULL CHAIN IN CLAMSHELL PKG



MODEL	STYLE
PWH9855G5	RED EAGLE IN CLAMSHELL PKG



MODEL	STYLE
PWH9855G7	ROBOT IN CLAMSHELL PKG



MODEL	STYLE
PWH9855G6	CANADIAN IN CLAMSHELL PKG

AUTO DARKENING HELMETS

PROFESSIONAL SERIES

Viewing Area :
98mm x 55mm (3.86" x 2.17")



MODEL	STYLE
PWH98551	CARBON FIBRE BLACK



MODEL	STYLE
PWH98553	CARBON FIBRE RED



MODEL	STYLE
PWH98552	CARBON FIBRE BLUE

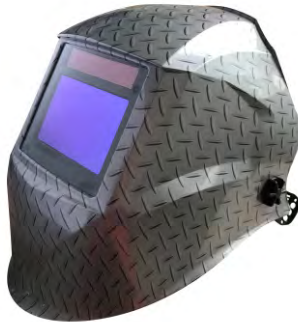
EXPERT SERIES AUTO DARKENING HELMETS

Now with **TRUE-COLOR** Technology

Viewing Area :
100mm X 65mm (3.94" X 2.56")



MODEL	STYLE
PWH9000	BLACK



MODEL	STYLE
PWH9000G8	STEEL PLATE



MODEL	STYLE
PWH9000G9	REAL CAMO



MODEL	STYLE
PWH9000G3	RACE CAR

- Viewing Area: 3.94" X 2.56" (100mm X 65mm)
- Best in Class Optical Clarity 1/1/1/1
- Dual Adjustable Shade Ranges: 4-8 / 9-13
- Grind / Weld Modes
- 4 Independent Sensors
- Internal Controls
- Adjustable Sensitivity
- Adjustable Delay

- Lightweight - 460g (16.2 oz)
- Switching Speed 1/30,000 sec.
- Suitable for Low Amp TIG Applications Down to 5 Amps
- Standard Cover Plate 4-1/2" X 5-1/4" (114.5mm X 133.35mm)
- Suitable for Full Respirator
- Mag Lens Compatible
- Ultimate Comfort Headgear
- Conforms to ANSI Z87.1-2003 and Colts CSA Z94.3-07

EXPERT SERIES AUTO DARKENING HELMETS

DELUXE SERIES



Viewing Area :
98mm x 43mm
(3.86" x 1.69")

Same features as Professional Models but with a smaller viewing

MODEL	STYLE
PWH9843	BLACK

MODEL	REPLACEMENT PARTS
PWHL1	OUTER LENS FOR ALL PWH98 HELMETS
PWHL2	INNER LENS FOR PWH9843 HELMETS
PWHL3	INNER LENS FOR PWH9855 HELMETS
PWHL4	INNER LENS FOR PWH9000 HELMETS
PWH187	SLOTTED HARD HAT ADAPTER SET
PWHHG	REPLACEMENT HEADGEAR PWH9843/9855
PWH188	HARD HAT ADAPTER FOR PWH9000 SERIES
PWHHG9000	HEADGEAR PWH9000 SERIES

ECONOMY WELDING HELMETS



ANSI Z87.1-1989
Approved



Excellent impact
resistant
polypropylene



Complete with
headgear & lenses -
individually boxed



MODEL	STYLE
WH754	FIXED FRONT

Model WH754 Fixed Front
Style 5½" X 4¼"
c/w adjustable head gear,
clear & shade 11 lenses.

MODEL	STYLE
WH750	FLIP FRONT

Model WH750 Flip Front
Style 2" X 4¼"
c/w adjustable head gear,
clear & shade 11 lenses.

MODEL	STYLE
WH752	WIDE VISION FLIP FRONT

Model WH752 Flip Front
Style 5½" X 4¼"
c/w adjustable head gear,
clear & shade 11 lenses.

MODEL	STYLE
WH622	HAND SHIELD

Model WH622 Fixed Front
Style Hand Shield 2 " X 4¼"
c/w internal handle, clear &
shade 11 lenses.

WELDING & COVER GOGGLES

PowerWeld goggles feature soft comfortable sides, adjustable headband straps and air vents to reduce fogging. Provide protection from impact and IR/UV in flame cutting and brazing applications. All models meet or exceed ANSI Z87.1 standards.

WELDING GOGGLES



CUP GOGGLE 50 MM

MODEL	LENSES
R600	SHADE #5 (50 MM)



COVER GOGGLE 2 X 4 1/4"

MODEL	LENSES
R950	SHADE #5 (2 X 4 1/4")



FLIP FRONT GOGGLE 50 MM

MODEL	LENSES
R850	SHADE #5 (50 MM)



FLIP FRONT GOGGLE 2 X 4 1/4"

MODEL	LENSES
R900	SHADE #5 (2 X 4 1/4)



GRINDING GOGGLE CLEAR

MODEL	LENSES
R1140	POLYCARBONATE



COVER GOGGLE SHADE 5

MODEL	LENSES
R1165	SHADE #5



COVER GOGGLE 50 MM

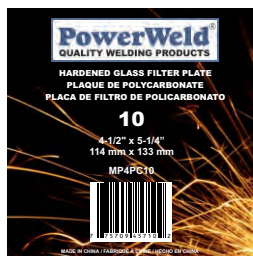
MODEL	LENSES
R800	SHADE #5 (50 MM)

RGS STRAPS

MODEL	DESCRIPTION
RGS	REPLACEMENT STRAPS FOR ALL GOGGLES C/W CLIPS

FILTER & COVER PLATES

FILTER PLATES



- Provides ultimate protection from ultraviolet and infrared rays during the welding process
- Precision ground and edged to allow a proper and safe fit
- Optically correct and precisely shaded hardened glass
- ANSI Z87.1

FILTERS	PART NO	SIZE	DESCRIPTION
	MP2H	2 X 4 1/4	HARDENED GLASS FILTER SHADES 4-14 (50 PER BOX), EACH
	MP4H	4 1/2 X 5 1/4	HARDENED GLASS FILTER SHADES 4-14 (25 PER BOX), EACH
	MP2PC	2 X 4 1/4	POLYCARBONATE FILTER SHADES 8-12 (100 PER BOX), EACH
	MP4PC	4 1/2 X 5 1/4	POLYCARBONATE FILTER SHADES 8-12 (50 PER BOX), EACH
	ML5H	50 mm	HARDENED GLASS FILTER SHADES 4-6 (50 PER BOX), PAIR

COVER LENS



POLYCARBONATE	PART NO	SIZE	DESCRIPTION
	PP1	2 X 4 1/4	SAFETY PLATE .060 - 100% POLYCARBONATE ANSI STAMPED - LENS IMPRINTED
	PP2	2 X 4 1/4	COVER PLATE .060 - 100% POLYCARBONATE
	PP4	4 1/2 X 5 1/4	COVER PLATE .060 - 100% POLYCARBONATE
	PL5	50 MM	COVER PLATE .060 - 100% POLYCARBONATE

2 X 4 1/4" & 50 MM 100 / BOX 500 / CASE 4 1/2 X 5 1/4" 25 / BOX 500 / CASE



CR-39	PART NO	SIZE	DESCRIPTION
	PP2CR	2 X 4 1/4	COVER PLATE .060 CR-39
	PP4CR	4 1/2 X 5 1/4	COVER PLATE .060 CR-39

2 X 4 1/4" 100 / BOX 500 / CASE 4 1/2 X 5 1/4" 50 / BOX 200 / CASE

GLASS	PART NO	SIZE	DESCRIPTION
	GP2	2 X 4 1/4	GLASS COVER PLATE, BULK PACKED (100 PER BOX)
	GP4	4 1/2 X 5 1/4	GLASS COVER PLATE, BULK PACKED (100 PER BOX), EACH
	GL5	2 X 4 1/4	GLASS COVER PLATE, BULK PACKED (100 PER BOX), PAIR

2 X 4 1/4" & 50 MM 100 / BOX 500 / CASE 4 1/2 X 5 1/4" 50 / BOX 400 / CASE

MAGNIFIERS & AUTO CARTRIDGES

MAGNIFIER - POLYCARBONATE

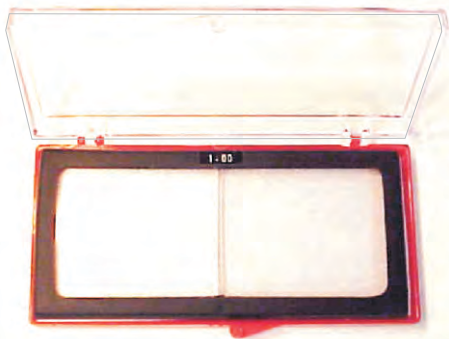
PART NO.	DESCRIPTION
MAG-75	Magnifier Plate Focol Power 0.75
MAG-100	Magnifier Plate Focol Power 1.00
MAG-125	Magnifier Plate Focol Power 1.25
MAG-150	Magnifier Plate Focol Power 1.50
MAG-175	Magnifier Plate Focol Power 1.75
MAG-200	Magnifier Plate Focol Power 2.00
MAG-225	Magnifier Plate Focol Power 2.25
MAG-250	Magnifier Plate Focol Power 2.50
MAG-300	Magnifier Plate Focol Power 3.00



MAGNIFIER LENS SELECTOR CHART

AGE	FOCOL POWER
Up to 41	Focol Power 0.75
41 - 44	Focol Power 1.00
44 - 47	Focol Power 1.25
47 - 50	Focol Power 1.50
50 - 52	Focol Power 1.75
52 - 56	Focol Power 2.00
56 - 60	Focol Power 2.25
60 - over	Focol Power 2.50

MAGNIFIER - GLASS



PART NO.	DESCRIPTION
M75	Magnifier Glass Plate 0.75 Focol Power- 2X4 1/4
M100	Magnifier Glass Plate 1.00 Focol Power- 2X4 1/4
M125	Magnifier Glass Plate 1.25 Focol Power- 2X4 1/4
M150	Magnifier Glass Plate 1.50 Focol Power- 2X4 1/4
M175	Magnifier Glass Plate 1.75 Focol Power- 2X4 1/4
M200	Magnifier Glass Plate 2.00 Focol Power- 2X4 1/4
M225	Magnifier Glass Plate 2.25 Focol Power- 2X4 1/4
M250	Magnifier Glass Plate 2.50 Focol Power- 2X4 1/4
M300	Magnifier Glass Plate 3.00 Focol Power- 2X4 1/4
M350	Magnifier Glass Plate 3.50 Focol Power- 2X4 1/4

AUTO DARKENING CARTRIDGES



Solar powered cartridges fit most standard 2" X 4 1/4" helmets or 4 1/2" X 5 1/4" helmets

- 2 arc sensors for reliable performance
- Dark state shade #10 or #11
- Light state shade #3
- Lens thickness 1/5" (5.0mm)
- Switching speed 0.5ms



MODEL	STYLE
XG-HP10	2" X 4 1/4" Shade #10

MODEL	STYLE
XG-HP11	2" X 4 1/4" Shade #11

MODEL	STYLE
XG-511	4 1/2" X 5 1/4" Shade #11

REPLACEMENT VISORS

All visors meet ANSI Z87.1 specifications

UNIVERSAL STYLE



804UCL



804BCL



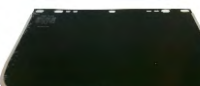
814ULG



814BLG



824UDG



824BDG



844UCL



844BCL



854ULG



854BLG



864UDG



864BDG

PART #	DESCRIPTION	SIZE
804UCL	Clear Unbound	8" x 12"
804BCL	Clear W/alum Band	8" x 12"
814ULG	Light Green Unbound	8" x 12"
814BLG	Light Green W/alum Band	8" x 12"
824UDG	Dark Green Unbound	8" x 12"
824BDG	Dark Green W/alum Band	8" x 12"
844UCL	Clear Unbound	9" x 15.5"
844BCL	Clear W/alum Band	9" x 15.5"
854ULG	Light Green Unbound	9" x 15.5"
854BLG	Light Green W/alum Band	9" x 15.5"
864UDG	Dark Green Unbound	9" x 15.5"
864BDG	Dark Green W/alum Band	9" x 15.5"

FIBRE METAL® STYLE



4118C



4118DG



4178C



4178G



4199C



4199G



4199-05

PART #	DESCRIPTION	SIZE
4118C	Clear Visor	8" x 11"
4118DG	Green Visor	8" x 11"
4178C	Clear Visor	8" x 16.5"
4178G	Green Visor	8" x 16.5"
4199C	Clear Visor	9-3/4" x 19"
4199G	Green Visor	9-3/4" x 19"
4199-05	Green Visor Shade #5	9-3/4" x 19"

SAFETY PRODUCTS

SWEATBANDS

MODEL	DESCRIPTION
	
PW3100V	PW3200V

Our innovative sweatband design has made wearing a helmet more comfortable, no matter what time of year it is. The pad has been field tested in a variety of industries and is proven to reduce "helmet head", to improve grip, and to provide maximum perspiration absorption. Made of 100% fleecy cotton and flame retardant, this product features an air cushioned inner layer made of thousands of small cells to hold excessive perspiration and a hook & loop fasteners to fit all major brands of suspender (hard hats) or non-suspender (welding and face shields) type headgear.
2 per package

FACESHIELD HEADGEAR

AUTO DARKENING LENS



- 02-0270-00 OUTER LENS AP/APC/APCV (5/PKG)
- 02-0280-00 INNER LENS AP/APC/APCV (5/PKG)
- 04-0270-00 OUTER LENS FOR 9000 SERIES SPEEDGLAS (10/PKG)
- 04-0280-00 INNER LENS FOR 9000X AND XF SERIES SPEEDGLAS (5/PKG)
- 04-0290-00 INNER LENS FOR 9000F AND V SERIES SPEEDGLAS (5/PKG)

- KP2897-1 LENS INSIDE LINCOLN® VIKING 5PK
- KP2898-1 LENS OUTER LINCOLN® VIKING 5PK
- KP2913-1 LENS OUTER LINCOLN® VIKING 5PK
- KP2931-1 LENS INSIDE LINCOLN® VIKING 5PK
- KP3043-1 LENS OUTER LINCOLN® VIKING 5PK
- KP3044-1 LENS INSIDE LINCOLN® VIKING 5PK

- M216-326 FRONT COVER LENS FOR MILLER® ELITE (5/PKG)
- M216-327 INSIDE COVER LENS FOR MILLER® ELITE (5/PKG)
- M231-410 INSIDE COVER LENS FOR MILLER® PRO-HOBBY (5/PKG)
- M231-411 FRONT COVER LENS FOR MILLER® PRO-HOBBY (5/PKG)
- M231-921 FRONT COVER LENS FOR MILLER® PROFROMANCE (5/PKG)
- M770-237 LENS INSIDE MILLER® XLI (5/PKG)
- M770-240 LENS FRONT MILLER® XLI (5/PKG)
- M770-241 LENS INSIDE MILLER® XLIX (5/PKG)



Headgear with ratchet adjustment

MODEL	STYLE
PW700	HEADGEAR

GOLD FILTER PLATES

GOLD-COATED POLYCARBONATE & GLASS FILTER PLATES



PART NO.	DESCRIPTION
MP2GO	2 x 4 1/4" Polycarbonate Plates Shades 9-12 Gold Coated, 50/box
MP4GO	4 1/2 x 5 1/4" Polycarbonate Plates Shades 9-12 Gold Coated, 25/box
MP2GG	2 x 4 1/4" Glass Plates Shades 9-12 Gold Coated, 100/box
MP4GG	4 1/2 x 5 1/4" Glass Plates Shades 9-12 Gold Coated, 50/box

WELDING & WORK GLOVES

WELDING GLOVE

Features

- Pearl shoulder split cowhide.
- 14" length.
- Cotton lined for comfort.
- Weltd fingers protect cotton stitching.
- Lock stitched with cotton thread.



MODEL	STYLE
PW1001	WELDING

WELDING GLOVE

Features

- Durable blue shoulder split cowhide.
- 14" length.
- Insulated with cotton/foam lining for added heat protection.
- Reinforced thumb.
- Weltd fingers protect stitching.
- Lock stitched with Kevlar® thread for added strength.



MODEL	SIZE
PW1002	LARGE
PW1002S	SMALL

WELDING GLOVE

Features:

- Durable premium black/red side split cowhide
- 14" length
- Insulated with cotton/foam lining
- Reinforced thumb
- Weltd fingers protect stitching
- Lock stitched with Kevlar® thread for added strength



MODEL	STYLE
PW1003	WELDING



TIG GLOVE

Features:

- Lightweight pearl deerskin split
- leather enhances dexterity.
- Unlined for maximum feel.
- 4" cuff.
- Straight thumb for best gun grip.
- Lock stitched with Kevlar® thread for added strength.

MODEL	SIZE
PW2003M	MEDIUM
PW2003L	LARGE

DRIVERS GLOVES



Features:

- Top grain cowhide palm and split leather back
- Rolled cuff and elastic wristband
- Keystone thumb

MODEL	SIZE
PW1414M	MEDIUM
PW1414L	LARGE
PW1414XL	EXTRA LARGE

WORK GLOVES



Features:

- Economy/Industrial grade shoulder split
- Patch palm & knuckle strap.
- Canvas back
- Gunn cut with 2 1/2" safety starched cuff.
- Lock stitched for added strength.

MODEL	STYLE
PW3001	ECONOMY

TIG GLOVE



Features:

- Top grain pearl goatskin leather enhances feel and durability.
- 4" cuff.
- Wing thumb.
- Lock stitched with Kevlar® thread

MODEL	SIZE
PW2002S	SMALL
PW2002M	MEDIUM
PW2002L	LARGE
PW2002XL	X-LARGE

PREMIUM TIG & MIG GLOVES

TIG PREMIUM GOATSKIN GLOVE



Features

Premium goatskin leather TIG welding gloves featuring a seamless index finger for smooth wire feeding and cowhide reinforcement at side of hand for extended protection and wear.

MIG PREMIUM GLOVE



Features

Soft goatskin with top grainsplit cowhide
Reinforced palm
Cowhide back with elastic
Seamless index finger
Lined for comfort
Lock stitched with Kevlar® thread for added strength

MODEL	SIZE
PW2101M	Glove TIG Premium Goatskin Medium
PW2101L	Glove TIG Premium Goatskin Large
PW2101XL	Glove TIG Premium Goatskin X-Large

MODEL	SIZE
PW4000S	SMALL
PW4000M	MEDIUM
PW4000L	LARGE
PW4000XL	EXTRA LARGE

MECHANIC GLOVES

PowerWeld chooses the highest quality of premium top grain cowhide, goatskin, pigskin and deerskin for our mechanics gloves. **PowerWeld** gloves are stitched with Kevlar® thread for added strength.

PIGSKIN



MODEL	STYLE
PW2660M	MEDIUM
PW2660L	LARGE
PW2660XL	X-LARGE

GOATSKIN



MODEL	STYLE
PW2670M	MEDIUM
PW2670L	LARGE
PW2670XL	X-LARGE

COWHIDE



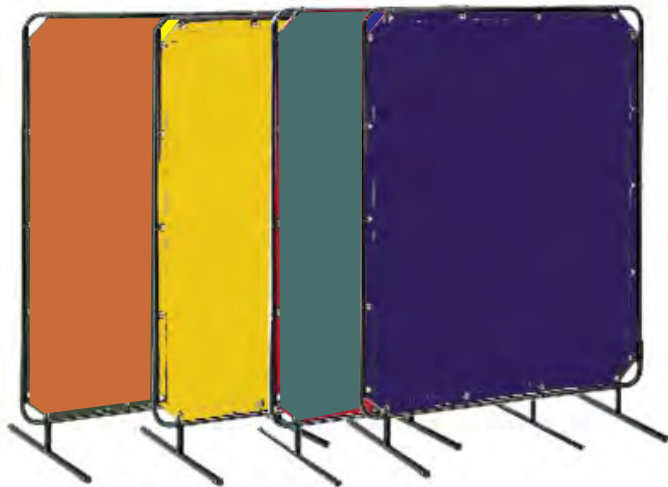
MODEL	STYLE
PW2680L	LARGE
PW2680XL	X- LARGE

DEERSKIN



MODEL	STYLE
PW2690L	LARGE
PW2690XL	X- LARGE

WELDING CURTAINS & FRAMES

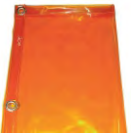


PowerWeld offers a range of curtains designed to protect casual passers-by from harmful radiation in industrial working environments. Arcs and sparks generated from welding and grinding are harmful to the naked eye. **PowerWeld** 14 mil transparent vinyl welding curtains allow those outside of the workspace protection during periods of short-term visibility, dispersing the light generated by the arc while allowing light back into the workspace. All curtains meet CE EN1598-2011, ensuring acceptable transparency, reflectance, IRUV protection and flame resistance. Curtain panels and frames are sold separately.



PWRC66OR
PWRC68OR

Transparent Orange 6' x 6' Replacement Curtain
Transparent Orange 6' x 8' Replacement Curtain



PWRC66YE
PWRC68YE

Transparent Yellow 6' x 6' Replacement Curtain
Transparent Yellow 6' x 8' Replacement Curtain



PWRC66GR
PWRC68GR

Transparent Green 6' x 6' Replacement Curtain
Transparent Green 6' x 8' Replacement Curtain



PWRC66BL
PWRC68BL

Transparent Blue 6' x 6' Replacement Curtain
Transparent Blue 6' x 8' Replacement Curtain



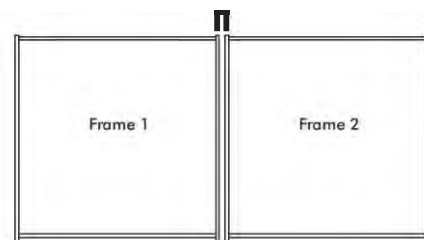
PWFR66 Welding Curtain Frame 6' x 6'
PWFR68 Welding Curtain Frame 6' x 8'



PWFRCS Castor Set for Screen Frame (4)



PWFR-CONNECT Screen Frame Connector



WELDING CLOTHING

PART NO.	DESCRIPTION
PW3280S-4XL	Leather Jacket 30" Small - 4XL
PW9230S-4XL	Combo Jacket 30" Small to 4XLarge
PW4236	Bib Apron 24" X 36"
PW4242	Bib Apron 24" X 42"
PW3221S-3XL	Cape Sleeves S-3XL
PW9096	Combination Sleeves 19"
PW3120	Bib Apron for Cape Sleeves 20"
PW5200-23	Sleeves 23" Length (pair)
PW525	Leather Rod Pouch
Pw527	Leather Spats 7" w/Velcro closure

PowerWeld leather welding jackets incorporate many additional features including:

- Heat and electrical insulated snaps.
- Inside pockets for extra use.
- Roll up collar with hook & loop closure.
- Welted shoulder seams.
- FR sateen lined collar/upper sleeves/shoulder
- provides comfortable skin contact and absorbs sweat.
- Reinforced double leather front snap panel.
- All stress points are rivetted.
- Adjustable snap cuffs.



PW9230S-4XL



PW4236
PW4242



PW3221S-3XL



PW9096



PW3120



PW5200-23



PW525



PW527

BACK HAND PADS



BACK HAND PADS

MODEL	DESCRIPTION
PWBHP01	Double Layer Protection
PWBHP02	Triple Layer Protection

PowerWeld leather clothing is made from split cowhide for maximum durability and heavy duty protection. Designed to allow complete body movement and freedom while welding. All seams are sewn with Kevlar® thread which is double locked stitched to minimize seam burnout.



PW3280S-4XL

FR WELDERS CLOTHING

PowerWeld FR cotton welding jackets provide protection during welding while offering lightweight comfort. 9oz material is treated for flame resistance to standard ASTM 6413/ D6413M-12. Powerweld 30" length jackets feature rugged 5 snap front closures, adjustable cuffs, a generous internal pocket, plus a convenient sleeve pocket for scribes, markers or small tools. Sateen weave material provides comfortable movement. Machine washable, they retain their flame resistance for up to 50 home washes. Full range of sizes available in both traditional green, as well as high visibility orange.

POWERWELD 9OZ FR COTTON JACKETS

PWGFRJS
PWGFRJM
PWGFRJL
PWGFRJXL
PWGFRJXXL
PWGFRJXXXL
PWGFRJXXXXL



PWOFRJS
PWOFRJM
PWOFRJL
PWOFRJXL
PWOFRJXXL
PWOFRJXXXL
PWOFRJXXXXL



FR SLEEVES

PWGFRSE



FR SLEEVES

PWGFRS

SLEEVES 18" W/ELASTIC CUFFS GREEN FR COTTON

- Lightweight 9oz Flame retardant cotton
- 18" Length
- Protects from sparks and spatter
- 2" Elastics cuffs at wrist and bicep for extra secure fit
- For light duty welding applications

SLEEVES 18" GREEN FR COTTON

- Lightweight 9oz Flame retardant cotton
- 18" Length
- Protects from sparks and spatter
- Elastics at wrist and bicep for secure fit
- For light duty welding applications



FR APRON

PWGFR36

APRON 36" GREEN FR COTTON

- Lightweight 9oz Flame retardant cotton
- 24" W x 36" Length
- Protects from sparks and spatter
- Straps at waist and shoulder
- For light duty welding applications



FR WELDING HOOD

PWGFRH

HOOD FULL DRAPE GREEN FR COTTON

- Lightweight 9oz Flame retardant cotton
- Full hood with drape to protect chest and neck
- Protects from sparks and spatter
- Wear under helmet for added protection
- Hook and loop closure

HIVIS SAFETY JACKETS

Powerweld Hi-Viz welding jackets provide additional visibility for working in hazardous environments. Available in two safety colors - bright orange and lime green. 2" wide silver reflective strips on front, back and sleeves increase visibility. An access slot on the back is provided for fall protection harness. 9oz sateen weave flame retardant cotton is lightweight and durable. Treated for flame resistance to standard ASTM 6413 / D6413M-12. Features snap closures and adjustable wrists.



- PWOHVL** JACKET FR ORANGE/REFLECTIVE HI-VIZ LARGE
- PWOHVM** JACKET FR ORANGE/REFLECTIVE HI-VIZ MEDIUM
- PWOHVS** JACKET FR ORANGE/REFLECTIVE HI-VIZ SMALL
- PWOHVXL** JACKET FR ORANGE/REFLECTIVE HI-VIZ X-LARGE
- PWOHVXXL** JACKET FR ORANGE/REFLECTIVE HI-VIZ XX-LARGE
- PWOHVXXXL** JACKET FR ORANGE/REFLECTIVE HI-VIZ XXX-LARGE
- PWOHVXXXXL** JACKET FR ORANGE/REFLECTIVE HI-VIZ XXXX-LARGE



- PWGHVL** JACKET FR LIME-GREEN/REFLECTIVE HI-VIZ LARGE
- PWGHVM** JACKET FR LIME-GREEN/REFLECTIVE HI-VIZ MEDIUM
- PWGHVS** JACKET FR LIME-GREEN/REFLECTIVE HI-VIZ SMALL
- PWGHVXL** JACKET FR LIME-GREEN/REFLECTIVE HI-VIZ X-LARGE
- PWGHVXXL** JACKET FR LIME-GREEN/REFLECTIVE HI-VIZ XX-LARGE
- PWGHVXXXL** JACKET FR LIME-GREEN/REFLECTIVE HI-VIZ XXX-LARGE
- PWGHVXXXXL** JACKET FR LIME-GREEN/REFLECTIVE HI-VIZ XXXX-LARGE

WELDING BLANKETS



LIGHT DUTY

MODEL	SIZE
PW18B66UC	6' X 6'
PW18B68UC	6' X 8'
PW18B810UC	8' X 10'
PW18B4050UC	40"w X 50 Yard Roll
PW18B6050UC	60"w X 50 Yard Roll

PW18B - 18oz uncoated heat treated Tan fiberglass welding blankets

- Suitable for light duty applications
- Service Temperature: 550°C / 1022°F
- Melting Temperature: 1200°C / 2192°F
- Grommets on 18" (45mm) centers on all sides
- Kevlar® stitched hems

Suitable usage:

- Welding vertical with light sparks and spatter
- Heat treating
- Designed for maximum flexibility using low irritating yarns

Popular applications:

- Auto repair shop or home garage
- General light fabrication

MEDIUM DUTY

MODEL	SIZE
PW24B66	6' X 6'
PW24B68	6' X 8'
PW24B810	8' X 10'
PW24B1010	10' X 10'
PW24B4050	40"w X 50 Yard Roll
PW24B6050	60"w X 50 Yard Roll

PW24B - 24oz acrylic Gold coated fiberglass welding blankets

- Suitable for medium duty applications
- Service Temperature: 550°C / 1022°F
- Melting Temperature: 1200°C / 2192°F
- Grommets on 18" (45mm) centers on all sides
- Kevlar® stitched hems

Suitable usage:

- General purpose welding with sparks and spatter
- Grinding and flame cutting
- Light slag protection

Popular applications:

- Auto repair shop
- General fabrication
- Most popular blanket for general protection from sparks and spatter during welding and grinding

HEAVY DUTY

MODEL	SIZE
PW18SIB66	6' X 6'
PW18SIB68	6' X 8'

PW18SIB - 18oz silica coated Bronze fiberglass welding blankets

- Suitable for heavy duty applications
- Service Temperature: 900°C / 1652°F
- Melting Temperature: 1700°C / 3000°F

- Grommets on 18" (45mm) centers on all sides
- Kevlar® stitched hems

Suitable usage:

- Heavy duty welding with sparks and spatter
- Grinding and flame cutting
- Furnace blanket
- Slag protection
- Heat treating
- Stress relief up to 1700°F

Popular applications:

- Heavy sparks and spatter
- Molten metal
- Thermal insulation

LIGHT DUTY

MODEL	SIZE
PW17B6050	60"w X 50 Yard Roll

PW17B - 17oz Red Silicone coated fiberglass welding blankets

- Suitable for light duty applications
- Service Temperature: 550°C / 1022°F
- Melting Temperature: 1200°C / 2192°F

Suitable usage:

- General purpose welding with light sparks and spatter
- Grinding and flame cutting
- Light slag protection
- Greater resistance to oil and water, puncture and tear than other materials

Popular applications:

- Oil and gas, refineries
- Expansion joints
- High-temperature insulation
- Heat shield and containment



MEDIUM DUTY

MODEL	SIZE
PW32B6050	60"w X 50 Yard Roll

PW32B - 32oz Red silicone coated fiberglass welding blankets

- Suitable for medium duty applications
- Service Temperature: 550°C / 1022°F
- Melting Temperature: 1200°C / 2192°F

Suitable usage:

- General purpose welding with sparks and spatter
- Grinding and flame cutting
- Light slag protection
- Horizontal weld protection
- Greater resistance to oil and water, puncture and tear than other materials
- Abrasion resistant

Popular applications:

- Oil and gas, refineries
- Expansion joints
- Equipment covers
- High-temperature insulation
- Heat shield and containment

FIRE BLANKET

MODEL	SIZE
PWFB46 Fire Blanket	4'X6' In Pouch



SAFETY SUPPLIES

WELDER'S ESSENTIALS KIT

Welding Helmet & GearBag



Auto Darkening Helmet
Variable Shade 9 - 13
Welders Gloves
Chipping Hammer
Positioning Magnet
Welding Cup Goggles
Standard Tip Cleaner
Single Flint Lighter
Clear Safety Spectacles
Wire Scratch Brush
Soapstone and Holder
MIG Welders Pliers

MODEL	STYLE
WEKIT	KIT

PowerWeld heavy
duty
helmet & gear bag

Store helmet,
gloves, and other
tools in a safe
place.

Drawstring closure
& shoulder carrying
strap.

MODEL	STYLE
PWHB	BAG

HELMET BAG



SAFETY SUPPLIES

EXPERT WELDER'S KIT



- PWH9000 Expert Helmet
- PW9230 Combo jacket (S - XXXXL)
- PW1002 Stick Gloves
- PW2002 TIG Gloves (S - XL)
- PWDUFFLE Duffel Bag
- PWFSH Flat Soapstone Holder
- TC-1 Tip Cleaner
- 1501 Striker
- 50000 Clear Jackson SG specs
- 50010 5.0 Jackson SG specs
- YS-50 MIG Pliers
- 85045 Wire Brush
- RLH-1 Chipping Hammer
- MG-11 Fillet Weld Gauge
- PWBEANIE Beanie
- PWGFT Gas Flow Tester

MODEL	STYLE
PWXPKIT	KIT

INDUSTRIAL DUFFLE BAG

Features:

- Dimensions: 24 x 12 x 12 inches
- Fabric resists wear and abrasion
- Three exterior pockets for welding accessories
- Includes a shoulder strap
- Added exterior usage leaves more room inside the bag for other items



MODEL	STYLE
PWDUFFLE	GEAR BAG

CHEMICALS

ANTI-SPATTER



Anti-Spatter Nozzle Shield

For Mig gun nozzle and welding surfaces quick dry formula, to save time and reduce cost.

- Reduces spatter build-up on MIG nozzles.
- Prevents spatter adhesion on surface.
- Reduces clean up time.
- Heat-resistant to withstand high temperature use.
- Non-flammable.
- Paint compatible.
- Contains no silicones.
- Contains no fluorocarbons.
- Uses CO2 propellant.
- Private label program available.
- Available in 16 and 24 oz. aerosols.

MODEL	SIZE
1620-16	473 ml/16oz

ANTI-SPATTER



MODEL	RANGE	SIZE
D500-1	ANTI-SPATTER 1 GALLON (RED)	
D500-5	ANTI-SPATTER 5 GALLON	
D500-55	ANTI-SPATTER 55 GALLON DRUM	

COOLANT

Coolant For Plasma, MIG & TIG Machines

An ethylene glycol based formulation for use in radiator circulator and re-circulator systems.

Used for cooling Plasma, MIG, TIG and resistance welding systems, as well as general industrial cooling applications. Temperature range: 19°F, 6°F and -60°F



MODEL	RANGE	SIZE
COOL1	19°F / -7°C	1 GAL/3.78L
COOL2	6°F / -14°C	1 GAL/3.78L
COOL3	-60°F / -52°C	1 GAL/3.78L
COOL1-55	19°F / -7°C	55 GAL/205L

PACKAGED 4 GALLONS / CASE

NOZZLE DIP

Economical formula to protect both manual and automatic MIG gun nozzles and MIG gun tips.



- Safe.
- Non-toxic.
- Contains no silicones.
- Non-flammable.
- Odorless.
- Contains no hydrocarbon solvents.
- 16 oz. unbreakable container.
- Private label program available.

MODEL	SIZE
108-16	454 grams/16oz

ZINC GALV SPRAY

Powerweld zinc rich re-galvanizing aerosols provide protective coatings to metals which help fight against rust and corrosion. Fast drying formula will not blister or burn away. Available in two finishes: PW6066 provides a bright finish. PW6095 provides a matte finish.



PW6066
Zinc Galv Spray 12oz Bright Finish
PW6095
Zinc Galv Spray
14oz Aerosol Matte finish

MODEL	SIZE
PW6066	340 grams / 12oz
PW6095	396 grams / 14oz

DYE PENETRANTS



MODEL	DESCRIPTION	SIZE
PW1500	Aerosol Cleaner	16 oz
PW2500	Aerosol Developer	16 oz
PW3000	Aerosol Penetrant	16 oz

PowerWeld Dye Penetrant Inspection chemicals provide a simple and cost effective method for the detection of surface flaws, cracks and defects. This three step process is applicable for use on materials of steel, stainless steel, aluminum, copper, cast iron and brass. Defects are clearly visible as shown by a red dye without the requirement of additional equipment. Meets military, nuclear, ASME and ASTM specifications.

CHEMICALS

SILVER BRAZING FLUX

PART NUMBER	DESCRIPTION	SIZE
HT1	FLUX-HIGH TEMP. SILVER BRAZING	1LB
HT12	FLUX-HIGH TEMP. SILVER BRAZING	1/2LB
HT5	FLUX-HIGH TEMP. SILVER BRAZING	5LB
LT1	FLUX-LOW TEMP. SILVER BRAZING	1LB
LT12	FLUX-LOW TEMP. SILVER BRAZING	1/2LB
LT14	FLUX-LOW TEMP. SILVER BRAZING	1/4LB
LT5	FLUX-LOW TEMP. SILVER BRAZING	5LB
LT35	FLUX-LOW TEMP. SILVER BRAZING	35LB

White low temp
TEMPERATURE 1050-1600° F 565-870°C

Black Hi Temp
TEMPERATURE 1050-1700° F 565-925°C



LUBE PADS & LUBRICANT

LUBE PADS

Wire Lube Pads

Keeps MIG, sub-arc, and flux core cable conduits producing for up to 3 months without down time for cleaning.

Eliminates erratic wire feed caused by dust, particles, and flashing being trapped inside conduit lines.

Increase wire surface feedability. Wire lube pad lowers the coefficient of friction in conduits approximately 60% and increases life of wire feed units.

Pretreatment of wire lube pads so they will not dry out or evaporate.

Contains no solvents, abrasives, carbon, sulfur, nitrogen, moly disulfide or silicones.

Non-toxic, non-flammable.

Economical and easy to use.

Available in recloseable plastic boxes, 4 or 6 pads to a box with one clip and Econo-Pak of 25 pads with clip.

Wire lube pads can be certified for nuclear welding.

Flexibility to use pad on both sides and on any axis.

Private label program available.



MODEL	# OF PADS
LUBE4	4
LUBE6	6
LUBE25	25

ROUND LUBE PADS

Powerweld's Mig Lube Pads are engineered to apply Powerweld's lubricant (come pretreated). Reapply lubricant as necessary. Lubrication allows smooth feeding of wire with poor cast, excessive helix, rusty surface and long feed liners (over 10').



Features:

Lube pads are pre treated with Powerweld's lubricant.

Lubrication allows smooth feeding of wires with poor cast, helix, rust and long feed liners.

For Aluminum, use Powerweld's Untreated White Pads.

MODEL	SIZE
PW7060	TREATED
PW7061	UNTREATED

LUBRICANT

Powerweld lubricant is specially formulated to re-lubricate welding wire lube pads. Save money by re-using pads, lower production costs by reducing wire feed drag. Removes wire dirt, rust and increases tip and liner life.

MODEL	SIZE
PW7040	8 oz / 236 ml



FILLET WELD GAUGES

PowerWeld fillet weld gauges are precision inspection tools designed to ensure quality and accuracy. Several models to choose from cover many applications.

Features include:

- Precision gauge
- Constructed of rust proof 22 gauge type 304 steel.
- Die blanked to eliminate sharp edges - adds to accuracy.
- Permanently etched lettering for long life and abrasion resistance.



MODEL	STYLE
MG-8	BRIDGE CAM

- Angle of preparation, 0° to 60°.
- Excess weld metal (capping size).
- Depth of undercut.
- Depth of pitting.
- Fillet weld throat size.
- Fillet weld length.
- Misalignment (high-low).



MODEL	STYLE
MG-5M	PIT DEPTH

- Check undercut
- Check pit depth
- Check porosity



MODEL	STYLE
MG-11	FILLET

- The fillet weld gauge allows fast, accurate measurement of eleven (11) fillet weld sizes: 1/8", 3/16", 1/4", 5/16", 3/8", 7/16", 1/2", 5/8", 3/4", 7/8", and 1", and their metric equivalents, to determine weld sizes, either concave or convex.
- Each gauge blade is made of 1-1/4" x 4" stainless steel to resist rust and bending.
- Blades are deburred to remove rough edges.
- All sizes and numerals are engraved into the surface for easier reading.



MODEL	STYLE
WG-06HILO	HI LO

- Slim design.
- Changes from standard to metric - simply remove gauge body, turn scales over and replace body.
- Measurements read in standard on one side & metric on opposite side.
- Measures internal alignment of pipe after fit-up/alignment, and cuts radiographic rejects.
- Measures internal misalignment of pipe before and after tacking.
- Measures bevel on end preparation.
- This handy device even measures scribe lines, socket welds, crown height of welds & fillet weld size.



MODEL	STYLE
DSG-01	DIGITAL

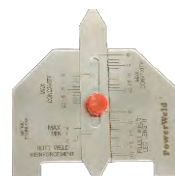
- Accurate readings instantly.
- Easy to read digital display.
- Zero setting at any position.
- Metric / Imperial system conversion any position.
- The digital welding gauge is equipped with an output port.
- Data can be input into a computer or a printer via special connecting cable.

Resolution: 0.01mm/0.0005"
Range: 0-12.7mm
Error: +/- 0.03mm +/- 0.001"
Operating Power: One silver oxide battery SR44, 1.55V (Included)
Working Temperature: 0°C to +40°C
Humidity: <80%
Storage Temperature: -10°C to +60°C



MODEL	STYLE
WG-07SFG	SKEW-T

- For checking angle of vertical member.
- For checking weld acute side.
- For checking weld obtuse side.



MODEL	STYLE
MG-6	AUTOMATIC

- Check reinforcement
- Check the throat of fillet weld
- Determine the leg size of the fillet weld

LOCKING PLIERS

PowerWeld locking pliers and c-clamps are made from nickel plated chrome vanadium steel for toughness and durability. Smooth turning screw adjustment provides maximum pressure and grip. C-clamp models are available with standard or swivel pad tips. Trigger release design for quick removal.



Locking Plier 6"
Long Nose w/Cutter
PW6LN



Locking Plier 7"
w/Curved Jaw/Cutter
PW7WR



Locking Plier 10"
w/Curved Jaw/Cutter
PW10WR



Locking C Clamp
6" STD
PW6R



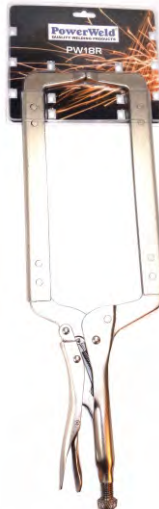
Locking C Clamp 6"
w/Swivel Pads
PW6SP



Locking C Clamp 11" STD
PW11R



Locking C Clamp 11"
w/Swivel Pads
PW11SP



Locking C Clamp 18" STD
PW18R



Locking C Clamp
18" w/Swivel Pads
PW18SP



Locking Chain
Clamp
PW20R

TOOLS & ACCESSORIES

CABLE HITCH



MODEL	STYLE
CH-240	CABLE HITCH

Cable Hitch allows you to support heavy long lengths of welding cable by hanging it on its handy hook assembly. Comes with a non-slip locking assembly.

NOZZLE REAMER



MODEL	STYLE
REAMER	MANUAL

- Cleans hot MIG nozzles on the torch
- Self adjusting to fit all sizes
- Expanding spring steel cleaning blades

BATTERY CLAMPS



MODEL	STYLE
BCR-600	RED
BCB-600	BLACK

Heavy duty 600 amp battery clamps with red handles for positive and black handles for negative



TORCH HOLDERS



TIG torch holder with magnetic base

MODEL	STYLE
MI-TTS-M	TIG



Electrode holder with magnetic base

MODEL	STYLE
MI-EHS-M	ARC



Chuck keeps positive on tungsten while sharpening

MODEL	STYLE
CSH	ACCESSORIES



MIG torch holder with magnetic base

MODEL	STYLE
MI-MTS-M	MIG

MAGNETS

- Multi-purpose holders for assembly and positioning. Adheres to most metal objects
- Ideal for welding, soldering, assembly and pipe installation
- Angles of 45°, 90° and 135°



Positioning magnet
Small 25# capacity

MODEL	SIZE
M061	3" x 3"



Positioning magnet
Medium 50# capacity

MODEL	SIZE
M062	4" x 4"



Positioning magnet
Large 75# capacity

MODEL	SIZE
M063	5" x 5"

SWITCHABLE MAGNETS



Angle Dual Switch
Magnet - Medium
PWAMAG-M



Magnetic Switchable
Ground Clamp - 300 amp
PWMGC-300



Magnetic Switchable
Ground Clamp - 600 amp
PWMGC-600



Angle Switchable
Magnet - Medium
PWSMAG-M



Angle Switchable
Magnet - Large
PWSMAG-L



Angle Magnet Single
Switch Medium
PWSSMAG-30



Angle Magnet Single
Switch Large
PWSSMAG-55

TOOLS & ACCESSORIES

SPOOL ADAPTOR



**Universal 4" - 1 & 2 lb
Spool Adaptor**

The universal welding wire spool adaptor quickly adapts most wire feeders and integrated MIG machines to use 4" (1 & 2 lb) spools without removing or altering the spindle assembly.

MODEL	TYPE
SA-1	UNIVERSAL

TIG ACCESSORY KITS



TIG Accessory Kits

Contain a selection of components plus Ceriated tungsten electrodes to prepare your TIG torch for immediate welding. Select kits are available for the most popular series of TIG torches on the market.

MODEL	TORCH SERIES	TUNGSTEN DIA
PWAK-1	9	.040", 1/16"
PWAK-2	17	.040", 1/16", 3/32"
PWAK-3	18, 26	1/16", 3/32", 1/8"
PWAK-4	20	1/16", 3/32", 1/8"

WELDING TABLE

- Welding workbench can be used anywhere - home, shop or in the field
- Folds up easily for storage or transportation
- Large work area of galvanized welded mesh 24" X 40" (61cm X 101cm)
- Work height of 36" (914cm)
- Heavy duty construction - 600lb (272kg) weight capacity



Welder's Bench Applications

Welding, pipe work, painters, machine shops, auto service shipping & receiving, assembly work, cut off & mitre saws.

MODEL	STYLE
WB2440	WELDING TABLE

TIG FINGER FEEDER



Feeds TIG filler rod comfortably. Hold the feeder like a pen or pencil. Insert the TIG filler wire from the rear of the unit – not from the front. With the feeder comfortable in your hand, advance the wire by rolling the rubber wheel with the tip of your index finger. Suitable for TIG wire diameters 0.8mm (.030") to 3.2mm (1/8").

MODEL	STYLE
PW1550	TIG FINGER FEEDER

WELDER'S PLIERS



Welders Multi-Use Tool

- Eight-way pliers
- Nickel plated finish
- Ideally suited for removal of hot spatter from nozzle ends

MODEL	STYLE
YS-50	MIG PLIERS
YS-H	PLIERS HOLSTER



Pliers Holster



- Chrome plated steel holder for flat soapstone
- Copper trigger slides and locks for soapstone positioning
- Spring steel pocket clip
- Includes soapstone

MODEL	STYLE
PWFSH	SOAPSTONE HOLDER

TOOLS & ACCESSORIES

SOAPSTONE CRAYONS



White #1 select soapstone
144 pieces per box
12 boxes per case

MODEL	STYLE
FS1	FLAT
RS1	ROUND

CABLE CUTTER



Cable Cutter, Shear Cut, Overall Length 9-1/4 In., Handle Design Dipped, Features High Leverage Design for Superior Cutting Ability, Designed with a Shear-Type Jaw for Cutting Aluminum and Soft Copper (Not for Use on Steel or ACSR type Cables), Cuts up to 100-Pair Cables, Made of Chrome Vanadium Steel

MODEL	STYLE
PW52	CABLE CUTTER

BASTARD FILE



MODEL	STYLE
PWHRB14	BASTARD FILE

Rounded on one side, flat on the other. Ideal for rounding out holes, files can be used on concave, convex, and flat surfaces. Rapidly removes material but leaves a smooth finish.
14" in length - Double cut on both sides.

WIRE BRUSHES



85047



85045



85050



85053



85051



85048



85055



85056

MODEL	DESCRIPTION
85047	CURVED HANDLE S.S. 3X19" ROWS
85045	CURVED HANDLE C.S. 3X19" ROWS
85051	SHOE HANDLE C.S. 4X16" ROWS
85053	SHOE HANDLE S.S. 4X16" ROWS
85055	TOOTHBRUSH S.S. 3X7" ROWS
85050	CURVED HANDLE S.S. 4X19" ROWS
85048	CURVED HANDLE C.S. 4X19" ROWS
85056	TOOTHBRUSH BRONZE 3X7" ROWS

C.S. = Carbon Steel S.S. = Stainless Steel

PIPE EQUIPMENT

HEAVY DUTY LARGE PIPE STANDS



- Standard Features
- Low Position Height: 32" (810 mm)
 - Max Position Height: 52" (1320 mm)
 - Footprint Width: 33.5" (850 mm)
 - Weight: 29 lbs (13.2 kg)
 - Pipe Diameter Capacity: up to 24" (600 mm)

PWLPS-RH
(with Roller Head)



- Standard Features
- Low Position Height: 32" (810 mm)
 - Max Position Height: 52" (1320 mm)
 - Footprint Width: 33.5" (850 mm)
 - Weight: 29 lbs (13.2 kg)
 - Pipe Diameter Capacity: up to 24" (600 mm)

PWLPS
(with V-Head)

HEAVY DUTY MEDIUM PIPE STAND



- Standard Features
- Low Position Height: 26" (660 mm)
 - Max Position Height: 36" (910 mm)
 - Footprint Width: 27" (685 mm)
 - Weight: 25 lbs (11.3 kg)
 - Pipe Diameter Capacity: up to 24" (600 mm)

PWMPS (with V-Head)

PWMPS-RH (with Roller Head)



STANDARD PIPE STANDS

- Standard Features
- Low Position Height: 28.5" (730 mm)
 - Max Position Height: 50.0" (1270 mm)
 - Footprint Width: 22" (560 mm)
 - Weight: 23 lbs (10.5 kg)
 - Pipe Diameter Capacity: up to 24" (600 mm)
 - Load Capacity: 2500 lbs (1135 kg)

PWSPS (with V-Head)

MODEL	DESCRIPTION
PWLPS	HEAVY DUTY LARGE W/ V HEAD
PWLPS-RH	HEAVY DUTY LARGE W/ ROLLER HEAD
PWMPS	HEAVY DUTY MEDIUM W/V HEAD
PWMPS-RH	HEAVY DUTY MEDIUM W/ ROLLER HEAD
PWSPS	STANDARD W/V HEAD
PW24RH	HD ROLLER HEAD
PW24VH	V HEAD
PWSPS-RH	WITH ROLLER HEAD



PW24RH

HEAVY DUTY ROLLER HEAD

- Standard Features
- Load Capacity: 3500 lbs (1385 kg)
 - Pipe Diameter Capacity: 2" to 24" (50 mm to 600 mm)



- Standard Features
- Low Position Height: 28.5" (730 mm)
 - Max Position Height: 50.0" (1270 mm)
 - Footprint Width: 22" (560 mm)
 - Weight: 23 lbs (10.5 kg)
 - Pipe Diameter Capacity: up to 24" (600 mm)
 - Load Capacity: 2500 lbs (1135 kg)

PWSPS-RH (with Roller Head)

PowerWeld heavy duty pipe stands are packed with features to provide safety and ruggedness on any jobsite. A wide base footprint keeps the stand stable under load. The reinforced vee-head prevents bending and is rated at 4000 lbs (1815 kg) capacity. High visibility orange for safety. Stands fold up for easy storage or transportation. T-handle to secure head in place plus safety pin. Carry handle for convenience. Safety ratio 3:1

TIG TORCH ADAPTORS

TORCH ADAPTORS



PWTA1820

50mm standard Dinse® adaptor with water side hose for use with 18-series and 20-series TIG torches



PWTA917GT

50mm standard Dinse® adaptor with gas-through for use with 9-series and 17-series TIG torches



PWTA26

50mm standard Dinse® adaptor with gas side hose for use with 26-series TIG torches



PWTA917

50mm standard Dinse® adaptor with gas side hose for use with 9-series and 17-series TIG torches



PWTA26GT

50mm standard Dinse® adaptor with gas-through for use with 26-series TIG torches



PWTA917GT25

25mm standard Dinse® adaptor with gas side hose for use with 9-series and 17-series TIG torches

Powerweld TIG Adaptor Machine Reference Guide

POWERWELD®

PW TIG ADAPTOR	MILLER®	LINCOLN®	ESAB®
PWTA917 (solid 50mm standard Dinse® w/ gas side hose for 150A)	CST 250, CST 280, CST 300, CST 400; Dynasty 200 SD, 200 DX, 210, 210 DX, 280, 280 DX, 300 Series, 350, 400 Series; Invision 350MPa, 352MPa, 354MP; Maxstar 91, 152, 200 Series, 210 Series, 280 Series, 300 Series, 350, 400; Multimat 255; Pipeworx 350 Fieldpro (w/ Dinse); Syncrowave 250 DX, 350 LX	Invertec 160-S, V200-I, V200-PRO, V250-S, V275-S, V300-I; Power MIG 210MP; Power Wave 355, 355M	Aristo MIG 4004i Pulse, 5000i, U5000i; Caddy Arc 151i, 152i, 201i; Caddy TIG 1500i, 2200i, 2200i AC/DC; ET 141i AC/DC, ET 186i AC/DC, ET 201i DC, 220i AC/DC, 301i AC/DC; Fabricator 211i, 252i; Handy Tig 180; Heliarc 160i, 161 AC/DC, 252, 281i AC/DC, 352, 353i AC/DC; MTS-3500i; Rebel EMP/EMS 215ic, EMP/EMS 235ic; Renegade ES 300i; Warrior 400i MV CC/CV
PWTA26 (solid 50mm standard Dinse® w/ gas side hose for 200A)	CST 250, CST 280, CST 300, CST 400; Dynasty 200 SD, 200 DX, 210, 210 DX, 280, 280 DX, 300 Series, 350, 400 Series; Invision 350MPa, 352MPa, 354MP; Maxstar 200 Series, 210 Series, 280 Series, 300 Series, 350, 400; Syncrowave 250 (all models), 300, 350 (all models); Multimat 255; Pipeworx 350 Fieldpro (w/ Dinse)	Invertec 160-S, V200-I, V200-PRO, V250-S, V275-S, V300-I; Power MIG 210MP; Power Wave 355, 355M	Aristo MIG 4004i Pulse, 5000i, U5000i; Caddy Arc 151i, 152i, 201i; Caddy TIG 1500i, 2200i, 2200i AC/DC; ET 141i AC/DC, ET 186i AC/DC, ET 201i DC, 220i AC/DC, 301i AC/DC; Fabricator 211i, 252i; Handy Tig 180; Heliarc 160i, 161 AC/DC, 252, 281i AC/DC, 352, 353i AC/DC; MTS-3500i; Rebel EMP/EMS 215ic, EMP/EMS 235ic; Renegade ES 300i; Warrior 400i MV CC/CV
PWTA917GT (gas-through 50mm standard Dinse® for 150A)	Econotig; Syncrowave 180SD, 200, 210	Aspect 375; Invertec V160-T, V200-T, V205-T, V310-T, V311-T; Precision TIG 185, 225; Square Wave TIG 175, 175-PRO, 200, 225, 275	
PWTA26GT (gas-through 50mm standard Dinse® for 200A)	Econotig; Syncrowave 180SD, 200, 210	Aspect 375; Invertec V160-T, V200-T, V205-T, V310-T, V311-T; Precision TIG 185, 225; Square Wave TIG 175, 175-PRO, 200, 225, 275	
PWTA1820 (solid 50mm standard Dinse® w/ water side hose)	200 SD, 200 DX, 210, 210 DX, 280, 280 DX, 300 Series, 350, 400 Series; Invision 350MPa, 352MPa, 354MP; Maxstar 200 Series, 210 Series, 280 Series, 300 Series, 350, 400; Syncrowave 250 (all models), 300, 350 (all models), 500; Aerowave; Pipeworx 350 Fieldpro (w/ Dinse)	Invertec 160-S, V200-I, V200-PRO, V250-S, V275-S, V300-I; Power MIG 210MP; Power Wave 355, 355M	Aristo MIG 4004i Pulse, 5000i, U5000i; Caddy Arc 151i, 152i, 201i; Caddy TIG 1500i, 2200i, 2200i AC/DC; ET 141i AC/DC, ET 186i AC/DC, ET 201i DC, 220i AC/DC, 301i AC/DC; Fabricator 211i, 252i; Handy Tig 180; Heliarc 160i, 161 AC/DC, 252, 281i AC/DC, 352, 353i AC/DC; MTS-3500i; Rebel EMP/EMS 215ic, EMP/EMS 235ic; Renegade ES 300i; Warrior 400i MV CC/CV

TOOLS & ACCESSORIES

C CLAMPS



MODEL	SIZE	THROAT DEPTH
402	2"	2.25"
404	4"	3.25"
406	6"	4.00"
408	8"	5.00"
410	10"	6.00"
412	12"	6.50"

Features: Rugged, heavy duty drop forged steel frame. Steel spindles are tough-hardened. New design frame for maximum strength. Lacquered finish. Steel swivel pads adjust freely to bear evenly on clamped part. Precision cut, single lead Acme thread for smooth operation. Steel spindles are copper plated for spatter protection. Never needs greasing; dry lubricated for smooth operation. Extra throat depth.

F CLAMPS



MODEL	SIZE (")	SIZE (mm)
F-1200-8	8"	200mm
F-1200-10	10"	250mm
F-1200-12	12"	300mm
F-1200-16	16"	400mm
F-1200-20	20"	500mm
F-1200-24	24"	600mm

Features: 1200kg (2600lb) capacity. Tempered steel sliding arm. Drop forged, electro-galvanized. Rail, fixed jaws and pressure plate heat-formed in one piece from cold drawn profiled steel, optimized for high static stress loadings. Heat treated, high carbon Acme threaded screw is tempered and quenched to give you greater loading capacity and longer service life. Spatter resistant. Throat depth 5½" (140mm)

THERMOMETERS



Measuring Range: -30°C to 260°C
Measuring Range: -22°F to 500°F
Built in laser pointer
Field of View: 8:1
Fast sampling time: less than 1 second
Automatic selection range and resolution
Backlit display
°C/°F switchable
Auto data-hold
Auto power off 8 seconds
Complete with 9V battery and carry pouch
One year warranty
Dimensions: 131mm x 96mm x 35mm
Weight: 130g

MODEL	STYLE
DT-810	COMPACT

Wide measuring range -50°C to 500°C
-58°F to 932°F

Built in laser pointer
Super large 3 ½ Digit (1999 counts) multifunction LCD
Backlit display
°C/°F switchable
Overload indication and beeper
Fast sampling time
Auto data-hold and power off
Fixed emissivity (0.95) covers 90% of surface applications.
Narrow 8:1 field of view
Automatic selection range and resolution
Complete with 9V battery & carry pouch
One year warranty
Dimensions: 159x79x57.2mm
Weight: 190g



MODEL	STYLE
DT-8812	DELUXE

TOOLS & ACCESSORIES

RAP-AROUNDS



PWRA150	SMALL - 2.5" WIDE X 2' LENGTH - 1" X 3" PIPE
PWRA160	MEDIUM - 4" WIDE X 4' LENGTH - 3" X 6" PIPE
PWRA170	LARGE - 4" WIDE X 6' LENGTH - 3" X 10" PIPE
PWRA177	XLARGE - 4" WIDE X 7' LENGTH - 6" X 14" PIPE
PWRA179	XXLARGE - 4" WIDE X 9' LENGTH - 8" X 18" PIPE
PWRA184	BULK 4" WIDE
PWRA185	BULK 5" WIDE
PWRA187	BULK 7" WIDE



Powerweld Rap-Arounds help welders and pipe fitters layout pipe with ease. Rugged, non-asbestos material withstands heat and abrasion. Sizes Medium to XX-large are marked – double ruled so that both top and bottom surfaces can be used for layouts – never upside down!

TIG CABLE COVERS



MODEL	DESCRIPTION
PWCCL10	CABLE COVER LEATHER 10' SNAP
PWCCL22	CABLE COVER LEATHER 22' SNAP
PWCCL10V	CABLE COVER LEATHER 10' VELCRO
PWCCL22V	CABLE COVER LEATHER 22' VELCRO



Nylon covers with zippered closure
3" and 4" widths

3m (10') Cable Cover

6.7m (22') Cable Cover

MODEL	STYLE
WC-3-10	3" X 10' (3m)
WC-4-10	4" X 10' (3m)

MODEL	STYLE
WC-3-22	3" X 22' (6.7m)
WC-4-22	4" X 22' (6.7m)

PIPE WEDGES

PowerWeld Pipe - Spacing Wedges are manufactured of high strength heat treated carbon steel. Use for creating precise weld gap during fit-up. Available in two sizes they accommodate small to large diameter pipe.

Large pipe wedge 1-1/2" X 8" X 1/4" (38mm x 200mm x 6mm)
Small pipe wedge 3/4" X 3-1/2" X 1/4" (19mm x 90mm x 6mm)

PWSPW SMALL



PWLPW LARGE



TOOLS & ACCESSORIES

HEAVY DUTY EXTENSION CORDS

Super flex extension cord - Super flexible, type SJTW outdoor cord. Lightweight-stays flexible to -67°F. 3 conductor grounded cord 15 Amps, 125V. Resistant to abrasions, oil, grease & chemicals. UL & ULC listed. Features power indicator in female receptacle to show that the power is on. Available in 25ft, 50 ft and 100 ft lengths. Three high-visibility colours to choose from.



MODEL	TYPE
EC25-YE	YELLOW JACKET 25' (8/CASE)
EC50-YE	YELLOW JACKET 50' (6/CASE)
EC100-YE	YELLOW JACKET 100' (4/CASE)



MODEL	TYPE
EC25-BL	BLUE JACKET 25' (8/CASE)
EC50-BL	BLUE JACKET 50' (6/CASE)
EC100-BL	BLUE JACKET 100' (4/CASE)



MODEL	TYPE
EC25-OR	ORANGE JACKET 25' (8/CASE)
EC50-OR	ORANGE JACKET 50' (6/CASE)
EC100-OR	ORANGE JACKET 100' (4/CASE)



MODEL	TYPE
EC50TT-YE	YELLOW JACKET 50' (6/CASE) TRIPLE TAP
EC100TT-YE	YELLOW JACKET 100' (4/CASE) TRIPLE TAP



PWOV20
Powerweld Portable
Electrode Oven
20lb capacity

ELECTRODE OVEN

- Electrode Capacity 20 lbs
- Electrode Size up to 18"
- Input Supply 110V, 250W, 50/60HZ
- Temperature Range 302°F MAX.
- Height 25.6"
- Outer Diameter 8.0"
- Inner Chamber Diameter 5.7"
- Inner Chamber Depth 19.0"
- Unit Weight 13.7 lbs

This Powerweld portable electrode oven is built jobsite tough. Keeps electrodes moisture free in the shop or in the field. Easy access to electrodes with the rod lifter. Large adjustable dial thermostat on the front for convenience - adjust temperature without removing your glove. Indicator light to show power is on.

8/3 TYPE STW 250V



Welder Power Cable Extension

NEMA 6-50 plug & receptacle
25' & 50' water resistant assembly
8/3 Type STW 40A-250V
Safety lighted ends



MODEL	TYPE
PCE-25	SAFETY LIGHTED 25' (4/CASE)
PCE-50	SAFETY LIGHTED 50' (2/CASE)

TOOLS & ACCESSORIES

BUTANE TORCH



BUTANE TORCH	
MODEL	STYLE
PW2020	BUTANE GAS



PowerWeld Butane Gas Micro Torch PW2020
 Electronic instant ignition system
 Adjustable flame
 Refillable butane fuel
 Max attainable temperature 2370°F
 Safety ignition lock

SOLDERING HEAD	
MODEL	STYLE
SH11	BUTANE GAS



HOT REFLECTOR	
MODEL	STYLE
SA51	BUTANE GAS

HOT BLOWER HEAD	
MODEL	STYLE
SH51	BUTANE GAS



GAS SAVER



Saves time and reduces gas cost

GAS SAVER	
MODEL	STYLE
GS-150	ACET OR LPG



GAS FLOW TESTER



Shield Gas Flow Tester.
 This easy to use device will take the guesswork out of optimizing your welds, and save on shield gas cost. The unit measures Argon and CO2 Flow Rates up to 25 LPM (52 CFH)
 Measures in Liters Per Minute.

MODEL	STYLE
PWGFT	GAS FLOW TESTER

LIGHTER

Lightnin Bug Striker

MODEL	STYLE
PW08-100	PIEZO STRIKER



STRINGER BEAD WHEELS & CUP BRUSHES

CUP BRUSHES



Powerweld cup brushes are designed for cleaning large surface areas. They remove rust, paint and scale and are used for general surface finishing.

Item #	Diameter	Wire Type	Trim Length	Wire Size	Arbor	Max RPM
PWCB3K58	3" (75 mm)	Mild Steel	1" (25 mm)	.020" (0.5 mm)	5/8"-11	14000
PWCB3K58SS	3" (75 mm)	Stainless Steel	1" (25 mm)	.020" (0.5 mm)	5/8"-11	14000
PWCB4K58	4" (100 mm)	Mild Steel	1-1/8" (30 mm)	.020" (0.5 mm)	5/8"-11	9000
PWCB5K58	5" (125 mm)	Mild Steel	1-1/8" (30 mm)	.020" (0.5 mm)	5/8"-11	6500

STRINGER BEAD WHEELS



MODEL	STYLE
PWSB458	STRINGER BEAD 4" X 5/8-11
PWSB458SS	STRINGER BEAD 4" X 5/8-11 STAINLESS STEEL

MODEL	STYLE
PWSB558	STRINGER BEAD 5" X 5/8-11
PWSB558SS	STRINGER BEAD 5" X 5/8-11 STAINLESS STEEL

MODEL	STYLE
PWSB658	STRINGER BEAD 6" X 5/8-11
PWSB658SS	STRINGER BEAD 6" X 5/8-11 STAINLESS STEEL

MODEL	STYLE
PWSB6558	STRINGER BEAD 6-1/2" X 5/8-11

PowerWeld stringer bead wheel brushes provide aggressive cleaning and fast material removal. Suitable for root and hot pass welds. Narrow face for confined and hard to reach areas. .020 diameter Carbon Steel Wire or 304 Stainless Steel.

REFLEX ABRASIVES

DEPRESSED CENTER

TYPE 27 FOR STEEL

RX116.00.25	A24R	4 1/2" X 1/4" X 7/8"
RX126.00.25	A24R	5" X 1/4" X 7/8"
RX176.00.25	A24R	7" X 1/4" X 7/8"
RX236.00.25	A24R	9" X 1/4" X 7/8"
RX113.00.25	A30S	4 1/2" X 1/8" X 7/8"
RX123.00.25	A30S	5" X 1/8" X 7/8"
RX173.00.25	A30S	7" X 1/8" X 7/8"



FLAP WHEELS

TYPE 27 FOR STEEL & STAINLESS STEEL



RX115.040Z	Type 27	4-1/2" x 7/8"	40 Grit
RX115.060Z	Type 27	4-1/2" x 7/8"	60 Grit
RX115.080Z	Type 27	4-1/2" x 7/8"	80 Grit
RX125.040Z	Type 27	5" x 7/8"	40 Grit
RX125.060Z	Type 27	5" x 7/8"	60 Grit
RX125.080Z	Type 27	5" x 7/8"	80 Grit
RX180.040Z	Type 27	7" x 7/8"	40 Grit
RX180.060Z	Type 27	7" x 7/8"	60 Grit
RX180.080Z	Type 27	7" x 7/8"	80 Grit

FAST CUT WHEELS

TYPE 1 FOR STEEL & STAINLESS STEEL

RX115.10.25	20A60R	4 1/2" X .045" X 7/8"
RX125.10.25	20A60R	5" X .045" X 7/8"
RX150.10.25	20A60R	6" X .045" X 7/8"



CUT OFF WHEELS

TYPE 1 FOR STEEL

RX230.20.25	A46R	9" X 5/64" X 7/8"
RX303.03.25	A24S	12" X 1/8" X 1"
RX354.28.25	A36S	14" X 1/8" X 1"



TOOLS & ACCESSORIES

ELECTRODE CANISTERS

Powerweld Electrode Canisters

Powerweld electrode canisters are designed to protect your welding electrodes during transport and storage. Sturdy impact resistant construction holds heated electrodes up to 250°F (121°C). Square sided to stop from rolling around during transportation. Rubber O-ring makes a tight seal and resists moisture from entering the canister. Shape design and coarse thread make removal of the cap easy when wearing welding gloves. Holds up to 10lb (4.54kg) of electrode. Available for 14" (350mm) and 18" (450mm) electrodes. Every canister comes with a carry strap!

PWEC14
Powerweld Electrode
Canister
for 14" electrodes

PWEC18
Powerweld Electrode
Canister
for 18" electrodes



PIPELINE WELDING CLAMPS

All Steel Construction - Powder Coated Finish
Stainless Steel Contact Points & Alignment Screw

ITEM	Pipe Dia Range (in)	Pipe Dia Range (mm)	Wt (lbs)	Wt (kg)
PWC125SS	1" - 2.5"	25mm - 63mm	4.6 lbs	2.1 kg
PWC26SS	2" - 6"	50mm - 152mm	9.25 lbs	4.2 kg
PWC512SS	5" - 12"	127mm - 305mm	18.75 lbs	8.5 kg



Clamp Pipe Welding
1" - 2.5" Pipe

PWC125SS



Clamp Pipe Welding
2" - 6" Pipe

PWC26SS



Clamp Pipe Welding
5" - 12" Pipe

PWC512SS

TOOLS & ACCESSORIES

INSPECTION MIRRORS



Powerweld inspection mirrors are available in several shapes and sizes to suit any inspection task. All models feature a telescoping handle and multi-angle ball joint to provide maximum accessibility. Large sizes also feature a soft and comfortably contoured non-slip handle.

Item	Description	Metric Size	Telescoping Spec Imp.	Telescoping Spec Metric.
PWB-2	Inspection Mirror oval 1" x 2" telescoping	25mm x 50mm	8" to 24"	205mm to 610mm
PWC-2	Inspection Mirror round 2" telescoping	50mm	9-1/2" to 28-3/4"	243mm to 722mm
PWE-2	Inspection Mirror round 1-1/4" telescoping	30mm	7-3/8" to 23-3/8"	189mm to 594mm
PWK-2	Inspection Mirror rectangle 2" x 4" telescoping	50mm x 100mm	11-3/8" to 30-1/2"	289mm to 765mm
PWS-2	Inspection Mirror round 3-1/4" telescoping	85mm	10-1/2" to 29-1/2"	266mm to 740mm



WELDING UMBRELLA

PWUB75

Powerweld Welding Umbrella

- 7.5' wide Welding Umbrella
- Flexible Fiberglass Ribs
- Adjustable Tilt
- Tripod Base Stand Included
- Flame Resistant Polyester Material

TOOLS & ACCESSORIES

TUNGSTEN SHARPENER



Tungsten Sharpener
in carrying case

PW32000TG



Replacement
Tungsten
Sharpener
Wheel

PW32000RW



PW32000TG

The Powerweld **PW32000TG** handheld tungsten sharpening grinder provides precise preparation of tungsten electrodes. The specialized grinding fixture head is designed to accommodate 6 diameters of tungsten electrodes with the option of four precise grinding angles. Properly sharpened tungsten electrodes produce superior weld quality and reliable arc starting. PW32000TG has grinding, facing and cutting capabilities. A double-sided grinding wheel provides long term performance.

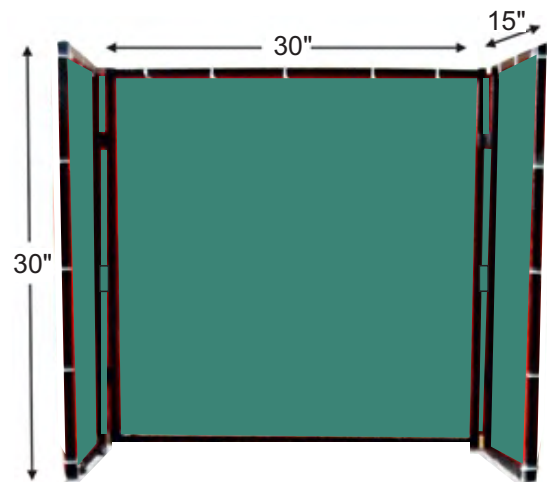
- **Input voltage:** 110V
- **Grinding angles:** 15° / 18° / 22.5° / 30°
- **Tungsten diameters:** 1.0mm, 1.6mm, 2.0mm, 2.4mm, 3.2mm, 4.0mm
040", 1/16", 5/64", 3/32", 1/8", 5/32"

PORTABLE WELDING BOOTH



Welding Table with Casters

PW3620WTC



Magnetic Table Top Welding Curtain - Green 30" x 30"

PW3030TTG

Powerweld portable welding booth features 14 ga galvanized steel table top 36" x 20". Pull out slag tray to capture and remove post-weld materials. Four casters provide portability. Has a welded tab for grounding, plus a hook for cable management or to hang a helmet on. Weight capacity 220 lbs.

Table top curtain and frame mounts securely to the table with 9 magnetic feet providing enclosed protection on 3 sides. Trans-vu green curtain measures 30" in height.

A


AMX Fire Extinguishers



AQU The Purge Dam Specialists



ATL Chipping Hammers & Hand Tools

B


BER MIG Guns, Parts & Welding Accessories



BOR Quality Carbide Tools

C


CON Contour Layout, Measuring Tools



CMX Welders Caps

COOPER Wiring Devices

CAM Electrical Plugs, Receptacles



CYL High Pressure, Low Pressure Cylinders

D


DIR Welding Cable



DLR Welding Cable Reels



DYN Industrial Chemicals, Lens, Faceshields

E


EMP Levels, Squares & Tape Measures



EVO Power Tools, Blades & Cutters

F


FNW Marking and Layout Tools



FLE Cutting, Grinding and Sanding Products

G


GTC Manufacturer of High Quality Gas Apparatus



GST Welding & Cutting Tips & Gas Apparatus

H


HDB Industrial Hose Products



KCP Safety Welding Products

J


KCP Safety Products, Welding Accessories



KLP Waterless Hand Cleaners

K


KCI Chemicals For The Welding Industry



KCP Kimberly-Clark Clothing & Respirators



KOM Hand Tools & Tape Measures

M


MFV Nondestructive Testing Products



MKL Industrial Markers, Chemicals, Fluxes, Marking/Layout Tools



MET Power Tools



MOT Plasma Air Filters, Welding Accessories

N

NF Protective Products

NLF Custom Screens



NWP Pipe-Pro Guides



NIS Industrial Markers

O



OCC Safety Products



OET Clamps, Couplings, Accessories



OLY Industrial Cable & Hose Measurers



OSP Pipe Guides



OSB Industrial Brushes

P



PAR MIG Guns, TIG Torches, Plasma Torches, MIG, TIG Plasma Parts



PET Fluxes - Brazing and Welding Fluxes



PHX Portable, Shop Electrode Flux Ovens

POWERWELD®

POW Gas & Arc Equipment, Safety, Cable, Welders, Tungsten, Alloys, Chemicals, Carts, Hose Reels

R



RAY Batteries, Portable Power & Lights



REF Abrasives, Diamond Discs



ROD Welding Rod Protection

S



FUL SHURLITE Spark Lighters, Renewal Flints



SOL Solar Flux For Welds On Stainless Steel & High Nickel Alloys



SAF Cylinder Carts, Hand Trucks



SEL Safety Products

SUMNER

SUM Equipment, Tools For Pipe Handling Requirements



SUP Compressed Gas Fittings, Assemblies



SPF SuperFlash Flash Arrestors

T



TEM Temperature Indicator Products

U



ULM Inspection Mirrors, Magnetic Pick-Up Tools

W



WLD Welding and Industrial Apparel



WDA Welding Chemicals



WES Compressed Gas Fittings, Assemblies



WSC Safety Screens



WYP Tip Cleaning Products



PROFESSIONALS PREFER POWERWELD

**QUALITY
WELDING,
SAFETY AND
INDUSTRIAL
SUPPLIES**

PowerWeld products are available from: